



State of Wisconsin  
**Land and Water Conservation Board**

PO Box 8911  
Madison, WI 53708-8911  
608-224-4622

**Land and Water Conservation Board  
Meeting**

**April 3, 2018**  
9:00 a.m.

Boardroom 106  
Wisconsin Department of Agriculture, Trade and Consumer Protection  
2811 Agriculture Drive  
Madison, WI

**Agenda**

*THE LWCB MAY TAKE ACTION ON ANY OF THE ITEMS LISTED ON THE AGENDA AT  
THE SCHEDULED MEETING*

- 9:00 a.m. 1 Call to order—Mark Cupp, LWCB
- a. Pledge of allegiance
  - b. Open meeting notice
  - c. Approval of agenda
  - d. Approval of December 5, 2017 meeting minutes
- 2 Public appearances\*  
*\*Please complete a Public Appearance Request Card and submit it to a DATCP representative before the start of the meeting*
- 3 Election of Officers— Mark Cupp, LWCB Chair
- 4 Five year review of Vilas County Land and Water Resource Management Plan
- 5 Schedule for 2018 LWRM plan revisions and 5 year reviews—Lisa Trumble, DATCP
- 6 Update on revisions to NR 151, targeted performance standards – Mary Anne Lowndes, DNR
- 7 Extension of DATCP projects from 2017 into 2018—Richard Castelnuovo, DATCP

*Mark Cupp, Chair • Lynn Harrison, Vice-Chair  
Members: Carl Chenoweth • Patrick Laughrin • Dave Solin  
Eric Birschbach • Caitlin Frederick • John Petty • Mary Anne Lowndes*

*April 3, 2018, LWCB Meeting Agenda*

- 8 Gathering input from stakeholders and public on nonpoint funding—Mark Cupp, LWCB Chair
  - 9 Consideration of Resource Protection Goals – Food, Land and Water Project – Mark Cupp, LWCB
  - 10 Agency reports
    - a. FSA
    - b. NRCS
    - c. UW-CALS
    - d. UW-Extension
    - e. WLWCA
    - f. DATCP\*
    - g. DNR\*
- \*Written report on transfers and reallocations of 2017 cost-share dollars included in LWCB meeting materials.
- 11 Planning for June 2018 Meeting—Mark Cupp, LWCB
  - 12 Adjourn

**MINUTES**  
**LAND AND WATER CONSERVATION BOARD MEETING**

**December 5, 2017**  
**DATCP Board Room**  
**Wisconsin Department of Agriculture, Trade and Consumer Protection**  
**2811 Agriculture Drive, Madison, Wisconsin**

**Item #1      Call to Order—pledge of allegiance, open meeting notice, approval of agenda, approval of October 3, 2017 LWCB meeting minutes.**

---

The meeting was called to order by Chairman Mark Cupp at 9:00 a.m. Members Lynn Harrison, Carl Chenoweth, Dave Solin, Eric Birschbach, John Petty, Caitlin Frederick, and Mary Anne Lowndes were in attendance. A quorum was present. Advisors Jim VandenBrook (WI Land + Water) and Angela Biggs (NRCS) also were present. Others present included Ann Hirekatur, DNR; and Brian Loeffelholz, Keith Foye, Richard Castelnuovo, Lisa Trumble, and Chris Clayton, DATCP.

Clayton confirmed that the meeting was publicly noticed.

Chenoweth moved to approve the agenda as presented, seconded by Solin, and the motion carried.

Lowndes requested a change to the draft minutes. Chenoweth moved to approve the October 3<sup>rd</sup> meeting minutes as amended, seconded by Frederick, and the motion carried.

Cupp formally introduced Wisconsin NRCS' new State Conservationist, Angela Biggs.

**Item #2      Public Appearances**

---

Greg Leonard, Eau Claire County Land Conservation Division, and Glory Adams, LCC Member, made a public appearance, sharing concerns that the county was unfairly penalized in the 2018 allocation process by criteria applied to award the county bond cost-sharing. In particular, the county was left with unspent NOD funds due to circumstances out of its control; and this underspending was taken into account in the 2018 allocation, resulting in a proposed reduction to the County's bond cost share allocation. Leonard and Adams asked the LWCB to address this concern when approving the 2018 Joint DATCP and DNR Allocation Plan (agenda Item #6).

**Item #3      Update on DATCP Order Approving Forest County Revised LWRM Plan**

---

Castelnuovo reported that though the LWCB recommended approval of Forest County's LWRM Plan during the October meeting, DATCP questioned the County's commitment to implement accepted conservation practices. As a result, DATCP approved the LWRM Plan on the condition that the county appear before the LWCB in 2018 and 2020 to report its progress in implementing its LWRM Plan before the county's five year review in 2022. Castelnuovo reiterated the department's intention to partner with all counties in their efforts to implement land and water conservation, and in that spirit, DATCP pledged assistance to Forest County.

The LWCB discussed the following: expectations and the process involved with LWCB reviews in 2018 and 2020; the County's response to the conditions; DATCP's offering of support to the county during the upcoming review process.

**Item #4 Recommendation for approval of Land and Water Resource Management Plan revision for Fond du Lac County**

---

Paul Tollard and Melanie Boone, Fond du Lac County Land and Water Conservation Department, and Dale Theel, Bob Giese, and Ken Depperman, Land Conservation Committee members, made a formal presentation in support of a 10-year approval of the county's LWRM plan.

DATCP's review of the plan using the LWRM Plan Review Checklist found that the plan complies with all requirements of section 92.10, Wisconsin Statutes, and Chapter ATCP 50, Wisconsin Administrative Code.

Fond du Lac County Land and Water Conservation Department provided written answers to the Board's standardized questions, recent work plans and accomplishments, and other materials (available on LWCB's website: [https://datcp.wi.gov/Pages/About\\_Us/LandWaterConservationBoard.aspx](https://datcp.wi.gov/Pages/About_Us/LandWaterConservationBoard.aspx)).

Board members and county representatives discussed the following: adoption of Nutrient Management Plans by livestock operators versus cash grain farmers; communicating the need to remain in compliance with state performance standards through FPP certification; susceptibility to nitrate contamination in the southern portion of the county (Towns of Byron and Oakfield); increasing concern over the potential for groundwater and well contamination in karst areas of the county; the county's efforts to mitigate groundwater contamination using NMPs and engaging county officials; the utilization of TRM grant funding.

Chenoweth moved to recommend approval of Fond du Lac County's plan revision for a period of 10 years, seconded by Birschbach, and the motion carried.

**Item #5 Recommendation for approval of Land and Water Resource Management Plan revision for Outagamie County**

---

Greg Baneck and Sara Francart, Outagamie County Land Conservation Department, and Dan Rettler, LCC Member, made a formal presentation in support of a 10-year approval of the county's LWRM plan.

DATCP's review of the plan using the LWRM Plan Review Checklist found that the plan complies with all requirements of section 92.10, Wisconsin Statutes, and Chapter ATCP 50, Wisconsin Administrative Code.

Outagamie County Land Conservation Department provided written answers to the Board's standardized questions, recent work plans and accomplishments, and other materials (available on LWCB's website: [https://datcp.wi.gov/Pages/About\\_Us/LandWaterConservationBoard.aspx](https://datcp.wi.gov/Pages/About_Us/LandWaterConservationBoard.aspx)).

Board members and county representatives discussed the following: the lack of participants in conservation speaking contests in schools; the LWCB's new approach to reviewing ten-year plan revisions.

Solin moved to recommend approval of Outagamie County's plan revision for a period of 10 years, seconded by Harrison, and the motion carried.

**Item #6 Report on 2018 Joint DATCP and DNR Final Allocation Plan**

---

Castelnuovo reported on two comments received by DATCP in response to the 2018 Preliminary Joint Allocation Plan: the first concerned the continued shortfall in county staff funding levels to meet the statutory goal, and the second concerned the proposed reduction to Eau Claire County's bond cost

share allocation (see agenda Item #2). The issue affecting Eau Claire County involved the bond funding formula. Last year, DATCP attempted to change the bond funding formula to address issues like the one that arose in Eau Claire County; however, input by the counties did not lead to a resolution. Castelnovo laid out a number of issues that must be resolved if Eau Claire County's concerns were to be addressed at this time.

Castelnovo reported no changes to the preliminary allocation plan.

Hirekatur reported an increase to the Notice of Discharge Reserve to \$1.5 million from \$1 million proposed in the preliminary allocation plan. She provided LWCB members with memos on the proposed funding of Targeted Runoff Management (TRM) and Urban Nonpoint Source & Storm Water Management (UNPS) applications for 2018.

The Board discussed the following regarding Eau Claire County's request: the LWCB expressed sympathy, while acknowledging no easy fix due to the existence of a set funding formula; challenges related to current method of funding individual counties to help implement conservation practices, coupled with the rising costs for practices.

Chenoweth moved to recommend approval of the 2018 Final Allocation, seconded by Harrison, and the motion carried.

**Item #7 Recommendation for approval of Land and Water Resource Management Plan revision for Washburn County**

---

Brent Edlin, Washburn County Land and Water Conservation Department, made a short formal presentation in support of a 10-year approval of the county's LWRM plan.

DATCP's review of the plan using the LWRM Plan Review Checklist found that the plan complies with all requirements of section 92.10, Wisconsin Statutes, and Chapter ATCP 50, Wisconsin Administrative Code.

Washburn County Land and Water Conservation Department provided written answers to the Board's standardized questions, recent work plans and accomplishments, and other materials (available on LWCB's website: [https://datcp.wi.gov/Pages/About\\_Us/LandWaterConservationBoard.aspx](https://datcp.wi.gov/Pages/About_Us/LandWaterConservationBoard.aspx)).

The Board members and county representatives discussed the following: utilization of TRM grant funding; interest in and opportunities for rotational grazing; the potential to reach farmers by using the Farmland Preservation Program, and town reluctance to adopt FPP due to concerns over limiting future revenues; efforts to protect shorelines given the development pressures on lakes in the county.

The LWCB suggested adding emphasis to rotational grazing in the county's work plan and continuing efforts to promote the Farmland Preservation Program.

Chenoweth moved to recommend approval of Washburn County's plan revision for a period of ten years, seconded by Solin, and the motion carried.

**Item #9 CREP Status Report**

---

Loeffelholz reported on the status of the CREP program and requested approval for proposed changes to allocating funds to counties. DATCP is proposing to reallocate funding due to changing enrollment rates in each county. Loeffelholz stated that the department received no comments on the proposed changes to funding levels.

The Board members discussed the following: the formula used to model annual reductions to phosphorus loss and soil erosion; dates for enrollment and reenrollment; popularity of the program in different counties, which is often driven by county promotion of the CREP program.

Harrison moved to recommend approval of the adjustment in county spending authorities for CREP in 2018, seconded by Birschbach, and the motion carried.

**Item #10 Five-year review of Eau Claire County Land and Water Resource Management Plan**

---

Greg Leonard, Eau Claire County Land Conservation Division, and Glory Adams, LCC Member, made a short formal presentation in support of the 5-year review of the county's LWRM plan.

Eau Claire County Land Conservation Division provided written answers to the Board's standardized questions, recent work plans and accomplishments, and other materials (available on LWCB's website: [https://datcp.wi.gov/Pages/About\\_Us/LandWaterConservationBoard.aspx](https://datcp.wi.gov/Pages/About_Us/LandWaterConservationBoard.aspx)).

Board members and county representatives discussed the following: efforts to control terrestrial invasive species; plans to pursue a large scale TRM grant; popular use of a pasture pump.

Solin moved to recommend approval of Eau Claire County's 5-year review request as presented, seconded by Harrison, and the motion carried.

Cupp presented Leonard with a plaque recognizing Eau Claire County LCC Chair Robin Leary for 11 years of service to the State of Wisconsin on the Land and Water Conservation Board. Lynn Harrison may present the certificate of recognition to Robin Leary at an upcoming meeting of the county LCC.

**Item #11a LWCB conservation priorities: Presentation on Food, Land and Water Conference**

---

VandenBrook presented findings from a two-year effort to convene stakeholders on the issue of land and water conservation in Wisconsin, primarily tackling ways forward. He summarized the goals that were set through the Food, Land and Water Project to make progress on four issues: groundwater quality, surface water quality, groundwater quantity, and protection of working lands. Setting these goals represents an attempt to articulate goals that agencies, landowners, farm groups, and other stakeholders can collaborate on, moving forward.

**Item #11b LWCB conservation priorities: Discussion and prioritization**

---

Cupp opened the floor to LWCB members to discuss LWCB priorities, including responses to the VandenBrook presentation. The LWCB discussed the following: what comes next; the unique challenges to protecting working lands; parts of the project's findings that the LWCB might set as targets for LWRM Plans; how the FLW findings fit into the state's nonpoint program.

Chenoweth moved to support all goals stated in the Food, Land and Water report, and to be a partner moving forward; the motion was seconded by Solin.

Birschbach opposed the motion, pointing to the report's characterization that phosphorus reduction is the sole responsibility of agriculture. He expressed concerns that parts of the report may be misperceived by the agricultural community.

Following discussion by Board members and advisors, an amended motion was offered: The LWCB expresses support for the Food, Land and Water report and project concepts, and commits to being a

partner moving forward, based on the outcome of January's meeting of the Food, Land and Water Steering Committee.

The Board voted to approve the amended motion, with abstentions by three agency representatives.

---

**Item #12 Approval of Proposed 2018 LWCB Annual Agenda**

Clayton and Trumble presented on the proposed 2018 LWCB Annual Agenda.

Chenoweth moved to approve the proposed 2018 LWCB Annual Agenda, seconded by Harrison, and the motion carried.

---

**Item #13 Agency Reports**

**DNR** – The new agency secretary is Dan Meyer. DNR will move forward with evaluating statewide implementation of and compliance with the agricultural performance standards. The evaluation will include talking with WI Land + Water and the counties to help gather information. Regarding the proposed revisions to NR 151, the goal is to complete the process for legislature approval before end of the session.

**DATCP** – The new agency secretary is Sheila Harsdorf. The Producer Led Watershed Grant awards are being determined as the total request amount exceeded available funds. Planning for transfer of the CAFO program from DNR to DATCP will be discussed by the agencies in the upcoming week.

**NRCS** – The NRCS is reorganizing to mission areas. The appointment of top officials is pending, and a hiring freeze is in place. The President's proposed budget includes cuts to staffing resources. In the meantime, NRCS is operating with funds received as part of the existing programing.

**WI Land + Water** – No report.

**Chair's report** – Recently, the LWCB had requested that the counties make a very brief presentation in support of LWRM Plan revisions and five-year reviews. Experience thus far has shown that the LWCB should meet the counties halfway between the amount of time recently requested and the amount of time formerly provided for presentations (e.g. 20 minutes).

---

**Item #14 Planning for next LWCB meeting**

The LWCB addressed this item while discussing Item #12.

---

**Item #15 Adjourn**

Harrison / Chenoweth moved to adjourn, seconded, and the motion carried. The meeting was adjourned at 2:48 pm.

Respectfully submitted,

---

Eric Birschbach, Secretary


Date

Recorder: CC, DATCP

**CORRESPONDENCE/MEMORANDUM** \_\_\_\_\_ **State of Wisconsin**

**DATE:** March 20, 2018

**TO:** Land and Water Conservation Board Members and Advisors

**FROM:** Richard Castelnuovo, DATCP   
Resource Management and Engineering Section, Bureau of Land and Water  
Resources

**SUBJECT:** Five Year Review of the *Vilas County Land and Water Resource Management Plan*

**Recommended Action:** This is an action item. The LWCB should determine whether the county has met the LWCB's guidance and criteria for a five year review of a LWRM plan approved for ten years. If the LWCB makes a formal determination that the county has failed to meet the LWCB guidance, DATCP will automatically modify its order to terminate approval of the county's plan effective December of this year.

**Summary:** The Vilas County land and water resource management plan has been approved through December 31, 2024 contingent on a five year review conducted prior to December 31, 2019. To assist in scheduling issues Vilas County has agreed to move up the date of its year review and present to the board in 2018. The expiration date of the current plan will remain December 31, 2014. In advance of this review, Vilas County has completed a DATCP approved form designed to implement the LWCB's June 2017 guidance and criteria for conducting a five year review. The county has provided written answers to four questions regarding past and future plan implementation, has provided the required work planning documents, and has appropriately involved the Land Conservation Committee.

The county has prepared either a PowerPoint presentation or a hand out to accompany its 5-8 minute snapshot regarding county resources and management issues.

**Materials Provided:**

- Completed Five Year Review Form
- 2017 Annual Workplan with Accomplishments
- 2018 Annual Workplan

**Presenter:** Carolyn Scholl, Vilas County Conservationist  
Marvin Anderson, Land Conservation Committee



VILAS COUNTY – Five Year Review of LWRM Plan 2015 - 2019

**Q1) Provide a representative number of accomplishments that can be directly traced to activities identified in multiple work plans. For each accomplishment, explain how the planning process helped the county achieve its outcome, including planning adjustments that helped better target county activities.**

| Priority Activities                          | 2015-2017<br>Benchmarks | Accomplished | 2018-2019<br>Benchmarks |
|--|-------------------------|--------------|-------------------------|
| <b>Plan / Install Conservation Practices</b> |                         |              |                         |
| Access Roads                                 | As Needed               | 1            | As Needed               |
| Streambank / Shoreline Protection            | 9                       | 7            | 6                       |
| Critical Area Stabilization                  | As Needed               | 2            | 1                       |
| Well Decommission                            | 3                       | 2            | 2                       |
| Site Compliance Checks                       | 30                      | 30           | 20                      |
| Healthy Lakes BMPs                           | N/A                     | Education    | 10                      |
| <b>Lake Assessments</b>                      |                         |              |                         |
| Aquatic Plant Monitoring (Pt-Int)            | 8                       | 8            | 6                       |
| Shoreland Inventory                          | 5                       | 5            | 6                       |
| Coarse Wood Habitat                          | 3                       | 3            | 6                       |
| AIS Early Detection                          | 8                       | 8            | 6                       |
| Water Quality                                | 3                       | 3            | 6                       |
| <b>Invasive Species Management</b>           |                         |              |                         |
| Site Monitor/ Tracking/ Follow-ups           | As Needed               | 12           | As Needed               |
| Sponsor PL Beetle Rearing                    | 3 groups                | 3 groups     | 3 groups                |
| Coordinate CB/CW Interns                     | 58 Interns              | 58           | 40                      |
| Boat Decontamination Program                 | N/A                     | Create       | Implement               |
| <b>Educate the Public</b>                    |                         |              |                         |
| Workshops / Train Volunteers                 | 24                      | 51           | 16                      |
| Presentations                                | 66                      | 148          | 44                      |
| <b>Other</b>                                 |                         |              |                         |
| Lake Organization Formation                  | As Needed               | 11           | As Needed               |
| Watershed Prioritization Project             | On-Going                | On-Going     | Complete                |
| Establish Pollinator Habitat                 | N/A                     | 1 Site       | Create 2 Public Sites   |
| Economic Contributions of Lakes              | N/A                     | Complete     | Research                |

A1) Completing work plans (& annual DATCP reporting) has become a positive task in my office for several reasons – first, it forces me to sit down early in the year to review the LWRM plan and evaluate if we are “on-task” or if adjustments will need to be made to meet objectives during a given year. Once the annual workplan for DATCP is complete, I meet individually with each employee to discuss work tasks that are specific to them. For the Department staff, this practice helps them to “focus in” on their main tasks for each given year. I feel strongly that by doing this, it makes them feel less overwhelmed by workload and they perceive this as a positive and productive meeting.

**Q2) Identify any areas where the county was unable to make desired progress in implementing activities identified in multiple workplans. For each area identified, explain the work plan adjustments that were made to refocus planned activities. If no areas are identified, explain how the county was able to make progress in all the areas planned.**

A2) The items highlighted in pink on the table (Q1) are items that have fallen short of our original goals.

Well Decommissioning: Groundwater assessment and management are included in Goal 2 of our LWRM plan to protect aquatic and terrestrial environments from non-point sources of pollution. Our target was to complete a minimum of 1 well decommission each year for a total of 5. To date, we have only completed 2. Educational clips on our website and news articles were completed in 2015 and 2016, but seemed to go unnoticed by the public until last year when we received a few bites of interest. In 2018 and 2019, we will continue to raise public awareness about this topic and strive to achieve at least 1 decommissioning per year.

Watershed Prioritization Project: DNR Lake Classification grants have helped to fund a prioritization mapping project for the county as discussed in our LWRM plan. As we have learned more about models and mapping procedures that are available to assist us with this project, we hit a wall. Most of the Phase 2 project is complete, however, in order to run the EVAAL model to assess the sheet and rill erosion potential of all the HUC 12's throughout the county, we are waiting for county culvert information that will be crucial for EVAAL success (more accurate hydrology). We received an extension from DNR on the phase 2 grant until our Mapping Department receives the culvert data needed to run EVAAL. Once this portion of the project is complete, we can proceed to finish the prioritization project and close out the DNR grant.

**Q3) Describe how the county's work plans implement its priority farm strategy and the effectiveness of county actions implementing agricultural performance standards and conservation practices on farms. In particular, the county should describe outreach, farm inventories, and additional funds that were pursued to implement its strategy.**

A3) Vilas County is not famous for its strong agricultural economy. That said, our LWRM plan still addresses issues that are focused on surface and ground water protection. The landowners most served here typically own property in riparian shorelines and we address soil erosion along those areas.

In recent years though, we have reached out to the small-scale and hobby farmers that reside here. We have talked one on one to a few of them in the Conover and Phelps communities. The purpose of our visits have been to let them know what services we could provide to them as the need should arise, and to begin the process of building trusting relationships. We've tried to take a non-pressure / voluntary approach with these people. One couple has utilized our cost-share program a few different times to address concerns in their small grass-fed beef operation.

Our strategy these next few years will be to work directly with our FSA representative to raise awareness of our existence among other local farms.

**Q4) Provide representative examples that show changes in direction for work planning in the upcoming 5 years, with specific examples provided showing adjustments in planned activities in the county's most recent work plan.**

A4) The items highlighted in yellow in the table (Q1) were not included as part of our work plan until recent years, and have been added as priority tasks going forward.

*Healthy Lakes* Best Management Practices (BMPs): A few years ago the DNR *Healthy Lakes* program didn't exist. It was created so that grant funding would be available to riparian landowners wishing to place fairly simple best management practices on their land to protect or improve water quality. There are 5 practices available for this program and landowners can incorporate 1, or all 5 on their riparian property as needed. Vilas County Land and Water Conservation intends to increase local participation in this program by taking the grant administration and project planning away from landowners. Education about this program started during 2016 and 2017. Ten projects will be planned during 2018 as included in the work plan, and a grant proposal submitted on February 1, 2019 for implementation of these same projects.

Boat Decontamination Program: As part of our strong invasive species management program, Vilas County Land & Water Conservation has partnered with UW-Oshkosh for several years in the *Clean Boats / Clean Waters* Boat Inspection Program. This partnership has expanded over the years and will continue, but we have also expanded the scope. UW-Oshkosh will purchase the equipment necessary to begin a boat washing program at selected boat landings throughout Vilas County to deter the spread of invasive species. Vilas County staff sought DNR lake grant funds to implement the program. We will provide the training and coordination needed to run the boat decontamination unit during 2018 and 2019 and we will store and maintain the unit.

Establish Pollinator Habitat: A pollinator partnership has been evolving with a few northern counties in response to the declining habitat available for pollinator species such as bees and Monarch butterflies. The partnership has begun to seek grant funding to begin educational efforts and to establish more habitat. Vilas County Land & Water Conservation staff is participating in this effort and will begin by establishing 2 new pollinator friendly gardens during the summer of 2018. These gardens will provide pollinator habitat AND educate the public at the same time because they will both include signage to raise public awareness. One will be placed at the local renovated library and the second will be located on the courthouse grounds near a sidewalk where the public must pass to enter the building.

Economic Contributions of Lakes: As Agriculture may be for many Wisconsin Counties, Lakes are the primary economic driver in Vilas County. For a long time, we have wanted to understand how healthy, clear lakes feed our local economy. Vilas County Land and Water Conservation has now developed a presentation that we think has captured most of these concepts. That is, until we met an economist from UW-Stout at the 2017 Lakes Convention. We have since sought grant funding to hire this professor to conduct a study on our lakes economy. Starting in 2018, he will perform research that is pertinent to the local area and try to capture, quantitatively, how healthy vs degraded lakes are helpful to our economy.

**VILAS COUNTY 2017 ANNUAL WORK PLAN  
LOCALLY-IDENTIFIED PRIORITIES**

Table 1: Planned activities and performance measures by category

| CATEGORY<br>(goal and objective from LWRM plan can be added in each category) | PLANNED ACTIVITIES WITH BENCHMARKS<br>If applicable identify focus areas, e.g. HUC 12 watershed code<br>(examples of types of “planned activities” in italics)   | PERFORMANCE MEASUREMENTS<br>(examples in italics)  |
|---|--|--|
| <ul style="list-style-type: none"> <li><i>Cropland</i></li> </ul>             |  |  |
| <b>Cropland, soil health and/or nutrient management</b>                       | <i>Practice installation<br/>NM planning and training<br/>Landscape-scale surveys and/or inventories</i>   |  |
| <ul style="list-style-type: none"> <li><i>Livestock</i></li> </ul>            |  |  |
| <b>Livestock</b><br>Goal 2, Objective D                                       | 1 Access Road cost-shared / installed (ATCP 50.65)<br>1 Site survey and/or inventory<br>1 Plan, Contract, Reimbursement  | <u>1 – ATCP 50.65 COMPLETE – Access Road</u><br>1 – Site Survey<br>1 – Contract, Plan, Reimbursement (\$ 5,341)  |
| <ul style="list-style-type: none"> <li><i>Water quality</i></li> </ul>        |  |  |
| <b>Water quality/quantity</b><br>Goal 2 / Objectives B, C, E                  | 4 Streambank / Shoreline Protection installed (50.88)<br>4 Site surveys and/or inventories<br>4 Plans, Contracts, Reimbursements<br>1 Landowner well abandonment project (50.97)<br>2 Healthy Lakes sites planned / cost-estimated | <u>2 – ATCP 50.88 COMPLETE – Shoreline Protection</u><br>3 – Site Surveys<br>5 – Contracts, Plans<br>2 – Full Reimbursements (\$ 23,989.50)<br>2 – Partial Reimbursements (\$ 14,000)<br><u>1 – ATCP 50.69 COMPLETE – Critical Area Stabilization</u><br>2 – Site Survey<br>1 – Contract<br>2 – Plan<br>½ - Reimbursement (\$ 4,885)<br>1 – Provide Technical Assistance only (non-cost shared)<br><u>1 – ATCP 50.97 COMPLETE – Well Decommission</u><br>2 – Site Visits<br>1 – Contract, Plan, Reimbursement (\$ 240)<br><u>DNR HEALTHY LAKES PROGRAM</u><br>4 – Site Visits for potential projects |
| <ul style="list-style-type: none"> <li><i>Forestry</i></li> </ul>             |  |  |
| <b>Forestry</b>   |  |  |
| <ul style="list-style-type: none"> <li><i>Invasive</i></li> </ul>             |  |  |
| <b>Invasive species</b><br>Goal 3 / Objective II                              | 5 AIS Lake surveys completed<br>2 TIS Management efforts completed   | <u>Terrestrial Invasive Species</u><br>2 – County Forests monitored<br>Hwy Right of Way Mngt effort (Year 1 of 3)<br>Technical Assistance for Boulder Junction, Presque Isle   |

**VILAS COUNTY 2017 ANNUAL WORK PLAN  
LOCALLY-IDENTIFIED PRIORITIES**

|  |   |  |
|--|---|--|
|  |   | <u>Aquatic Invasive Species</u><br>3 – Lake surveys for AIS Early Detection<br>Purple Loosestrife Beetle Rearing Project (Tenderfoot L, Deerskin R, ER Chain)  |
| <ul style="list-style-type: none"> <li><i>Wildlife</i></li> </ul>            |   |  |
| <b>Wildlife-Wetlands-Habitat</b><br>Goal 2 / Objective D<br>Goal 1<br>Goal 4 | Wildlife damage program administration<br>Bat Monitoring coordination & administration<br>Create a Wetland “type” map<br>Sort Wetlands based on vulnerability factors<br>Survey wetlands for early signs of degradation   | <u>WILDLIFE</u><br>Wildlife damage program administered<br>7 Bat Monitoring volunteers trained<br>Bat Monitor Data Mngt<br><u>WETLANDS</u><br>Monitoring protocol created to ID invasives & vulnerability<br>1 – wetland surveyed to test new protocol<br>2 – wetland education walks  |
| <ul style="list-style-type: none"> <li><i>Urban</i></li> </ul>               |   |  |
| <b>Urban issues</b>  | <i>Stormwater control</i><br><i>Construction site erosion control</i><br><i>Floodplain protection</i>   | <u>Stormwater</u><br>Olson Memorial Library parking lot runoff mngt – rain garden<br>Flooding Inspection @ Mapleview Resort  |
| <ul style="list-style-type: none"> <li><i>Watershed</i></li> </ul>           |   |  |
| <b>Watershed strategies</b><br>Goal 4 / Objective D                          | Map where practices have been installed countywide<br>Create a map of potential erosive areas in HUC 12s, (using EVAAL)<br>Rank the health status of HUC 12 watersheds  | Run EVAAL model on all HUC 12 watersheds (waiting for culvert info)<br>Phase 2 Lakes & Watersheds Project on hold  |
| <ul style="list-style-type: none"> <li><i>Other</i></li> </ul>               |   |  |
| <b>Other</b><br>Goal 1, All<br>Goal 2, Objective E                           | Education / Public Outreach / Technical Assistance<br>(Topics: Healthy Lakes, Shorelands, Soil Erosion Remediation, Wetlands, TIS, AIS, Lake Districts, Youth Programs, CB/CW, Well Abandonment, Economics of Lakes)<br>Directed Lakes Assessments<br>Seek Grant Funding for County Projects / Reporting<br>Participate in meetings of lake orgs; local, regional and state partners and groups | <u>Lake Organization Assistance</u><br>7 – CB/CW Trainings<br>10 – Grant Assistance<br>Meeting Attendance<br><u>Technical Assistance Requests</u><br>ID aquatic plants, PL Beetle rearing & release, pollinator project, native plant gardens, advisory meeting attendance, Lake District formation, Town Lakes Committee formation, Healthy Lakes, AIS, TIS<br><u>Seek Grants</u><br>2018 SWRM, DNR AEPP Boat Decontamination program, 2 Lumberjack RC&D grants (WQ Economics Analysis, Boat Decontamination) |

**VILAS COUNTY 2017 ANNUAL WORK PLAN  
LOCALLY-IDENTIFIED PRIORITIES**

|  |  |  |
|--|--|--|
|  |  | <u>Directed Lakes Project</u><br>WDNR Grant Funds secured<br>3 – Lake Surveys COMPLETE (WQ, Plants, AIS, Shorelands,<br>Woody Habitat) |
|  |  |  |

Table 2: Planned activity related to permits and ordinances

| Permits and Ordinances                           | Plans/application reviews anticipated | Permits anticipated to be issued |
|--|---------------------------------------|----------------------------------|
| Feedlot permits                                  |                                       |                                  |
| Manure storage construction and transfer systems |                                       |                                  |
| Manure storage closure                           |                                       |                                  |
| Livestock facility siting                        |                                       |                                  |
| Nonmetallic/frac sand mining                     |                                       |                                  |
| Stormwater and construction site erosion control |                                       |                                  |
| Shoreland zoning                                 |                                       |                                  |
| Wetlands and waterways (Ch. 30)                  | 2                                     | 2 – COMPLETED                    |
| Other  |                                       |                                  |

Table 3: Planned inspections

| Inspections                                      | Number of inspections planned |    |
|--|-------------------------------|----|
| Total Farm Inspections                           |                               |    |
| For FPP  |                               |    |
| For NR 151                                       |                               |    |
| Animal waste ordinance                           |                               |    |
| Livestock facility siting                        |                               |    |
| Stormwater and construction site erosion control |                               |    |
| Nonmetallic mining                               |                               |    |
| Cost Share O&M Compliance Checks                 | 10                            | 10 |

**VILAS COUNTY 2017 ANNUAL WORK PLAN  
LOCALLY-IDENTIFIED PRIORITIES**

Table 4: Planned outreach and education activities

| Activity   | Number | 2017 Accomplishments  |
|--|--------|---|
| Tours  | 1      | 2   |
| Field days   | 2      | 3   |
| Trainings/workshops                                | 4      | 10  |
| School-age programs (camps, field days, classroom) | 3      | Conservation Poster Contest (35 submittals)<br>4 school programs (WQ Info, Ash Trees, Watersheds, Invasive posters) |
| Newsletters  |        |   |
| Social media posts                                 | 20     | Constant Contact 16   |
| News release/story                                 | 3      | 14  |
| Public Presentations                               |        | 29  |

**VILAS COUNTY 2018 ANNUAL WORK PLAN  
LOCALLY-IDENTIFIED PRIORITIES**

Table 1: Planned activities and performance measures by category

| CATEGORY<br>(goal and objective from LWRM plan can be added in each category)                                       | PLANNED ACTIVITIES WITH BENCHMARKS<br>If applicable identify focus areas, e.g. HUC 12 watershed code<br>(examples of types of “planned activities” in italics)  | PERFORMANCE MEASUREMENTS<br>(examples in italics)  |
|---|---|--|
| <ul style="list-style-type: none"> <li><i>Cropland</i></li> </ul>   |   |  |
| <b>Cropland, soil health and/or nutrient management</b>   |   |  |
| <ul style="list-style-type: none"> <li><i>Livestock</i></li> </ul>  |   |  |
| <b>Livestock</b>  |   |  |
| <ul style="list-style-type: none"> <li><i>Water quality</i></li> </ul>  |   |  |
| <b>Water quality/quantity</b> (other than activities already listed in other categories)<br><br>Goal 2, Obj A, B, E | 1 – ATCP 50.69 – Critical Area Stabilize (\$1,050)<br>5 – ATCP 50.88 – Shoreline Protection (\$25,750)<br>2 partial + 3 full reimbursements<br>3 site surveys, plans, contracts<br>1 – ATCP 50.97 – Well Decommissioning (\$322)<br>5 Healthy Lakes Projects<br>Site visits, Plans, Cost Est.<br>4 Directed Lakes Assessments | Type and units of practice(s) installed<br>Amount of cost-share dollars spent<br># of Site Visits, Contracts, Plans, Surveys, & Reimbursements<br># of Healthy Lakes Projects<br># of completed Directed Lakes Assessments |
| <ul style="list-style-type: none"> <li><i>Forestry</i></li> </ul>   |   |  |
| <b>Forestry</b>   | Provide follow-up site visits for invasive plant reports  | # follow ups or education opportunities  |
| <ul style="list-style-type: none"> <li><i>Invasive</i></li> </ul>   |   |  |
| <b>Invasive species</b>   | Boat Decontamination Program<br>Provide Training for Volunteer Monitoring<br>Monitor wetlands for presence / absence  | # of volunteer trainings<br># of wetlands monitored  |
| <ul style="list-style-type: none"> <li><i>Wildlife</i></li> </ul>   |   |  |
| <b>Wildlife-Wetlands-Habitat</b> (other than forestry or invasive species)  | Monitor Wetlands for degradation vulnerability<br>Wildlife damage program<br>Establish Pollinator Habitat - Phase 1<br>Bat Monitoring Program   | # of wetlands monitored<br>Administer Wildlife Damage Program<br>Pollinator Garden planned and approved<br>Volunteers trained; monitoring efforts complete   |
| <ul style="list-style-type: none"> <li><i>Urban</i></li> </ul>  |   |  |
| <b>Urban issues</b>   | Stormwater control – Rain Garden  | Technical Assistance at Olson Library  |



**VILAS COUNTY 2018 ANNUAL WORK PLAN  
LOCALLY-IDENTIFIED PRIORITIES**

- *Watershed*

|                                       |   |  |
|---------------------------------------|---|--|
| <b>Watershed strategies</b><br>Goal 4 | Run EVAAL on HUC 12 watersheds<br>Rank Health Status of HUC 12 watersheds | Modeling completed<br>Develop a system to rank health of HUC 12s |
|---------------------------------------|---|--|

- *Other*

|   |  |   |
|---|--|---|
| <b>Other</b><br>Goal 1, Objective A, D, G | Guidebook – Lk District Formation “Co Perspective”<br>Local Conservation Poster / Speaking Contest<br>Create Brochure for Farmers<br>Seek Grant Funds – Healthy Lakes, DNR Lake Grant<br>Report / Close Lakes Classification Grant – Phase 2 | Guidebook Complete<br># of poster / speeches<br>Farmer Brochure Complete<br>Amount of grant funding applied for<br>Phase 2 Grant closed out |
|---|--|---|

Table 2: Planned activity related to permits and ordinances

| Permits and Ordinances                           | Plans/application reviews anticipated | Permits anticipated to be issued |
|--|---------------------------------------|----------------------------------|
| Feedlot permits                                  |                                       |                                  |
| Manure storage construction and transfer systems |                                       |                                  |
| Manure storage closure                           |                                       |                                  |
| Livestock facility siting                        |                                       |                                  |
| Nonmetallic/frac sand mining                     |                                       |                                  |
| Stormwater and construction site erosion control |                                       |                                  |
| Shoreland zoning                                 |                                       |                                  |
| Wetlands and waterways (Ch. 30)                  | 2                                     | 2                                |
| Other  |                                       |                                  |

**VILAS COUNTY 2018 ANNUAL WORK PLAN  
LOCALLY-IDENTIFIED PRIORITIES**

Table 3: Planned inspections

| Inspections                                      | Number of inspections planned |
|--|-------------------------------|
| Total Farm Inspections                           |                               |
| For FPP  |                               |
| For NR 151                                       |                               |
| Animal waste ordinance                           |                               |
| Livestock facility siting                        |                               |
| Stormwater and construction site erosion control |                               |
| Nonmetallic mining                               |                               |
| Cost Share O&M Compliance Checks                 | 10                            |

Table 4: Planned outreach and education activities

| Activity   | Number       | 2018 Accomplishments |
|--|--------------|----------------------|
| Tours  | 2 (Wetlands) |                      |
| Field days   |              |                      |
| Trainings/workshops                                | 5            |                      |
| School-age programs (camps, field days, classroom) | 2            |                      |
| Newsletters  |              |                      |
| Social media posts                                 | 12           |                      |
| News release/story                                 | 6            |                      |
| Public Presentations                               | 10           |                      |

Table 5: Staff Hours and Expected Costs (staff can be combined or listed individually)

| Staff/Support                         | Hours | Costs    |
|---------------------------------------|-------|----------|
| County Conservationist                | 2080  | \$60,000 |
| Conservation Specialist               | 2080  | \$49,000 |
| Lake Conservation Specialist          | 2080  | \$47,400 |
| LTE - Technician                      | 520   | \$ 7,800 |
| <b>Cost Sharing</b> (can be combined) |       |          |
| Bonding                               | N/A   | \$27,125 |
|                                       |       |          |
|                                       |       |          |
|                                       |       |          |

**CORRESPONDENCE/MEMORANDUM \_\_\_\_\_ STATE OF WISCONSIN**

**DATE:** March 21, 2018

**TO:** Land and Water Conservation Board Members and Advisors

**FROM:** Richard Castelnuovo, DATCP   
Resource Management and Engineering Section, Bureau of Land and Water Resources

**SUBJECT:** 2018 LWRM schedule

**Recommendation:** This is a not an action item. However, the Board may use this information to plan future meetings and taking our related actions to effectively manage its review of land and water resource management (LWRM) plans.

**Summary:** For 2018, eight counties that will be presenting a revised LWRM plan for a Board recommendation and one county that will present a 5 year review of their LWRM plan approved for 10 years. As requested, two counties will be coming back to the board to report on the progress of their LWRM plans.

In an attempt to develop a balanced workload that accommodates county preferences and evenly distributes the LWCB presentations, DATCP has prepared the attached 2018 schedule (See Table 1).

**Materials Provided:** Table 1. LWRM Proposed Plan Schedule 2018

**Presenter:** Lisa Trumble, DATCP

| <b>Table 1.</b> | <b>2018</b>      | <b>LWCB</b>     | <b>SCHEDULE</b> |                  |
|-----------------|------------------|-----------------|-----------------|------------------|
| <b>COUNTY</b>   | <b>CONTACT</b>   | <b>RESPONSE</b> | <b>ACTION</b>   | <b>LWCB DATE</b> |
| DANE            | Amy Callis       | 6/1/17          | Plan Revision   | December         |
| GRANT           | Lynda Schweikert | 9/19/17         | Plan Revision   | August           |
| JUNEAU          | Matt Komiskey    | 7/11/17         | Plan Revision   | October          |
| GREEN LAKE      | Paul Gunderson   | 2/6/17          | Plan Revision   | October          |
| MONROE          | Bob Micheel      | 7/6/17          | Plan Revision   | December         |
| OZAUKEE         | Andy Holschbach  | 9/19/17         | Plan Revision   | October          |
| ST CROIX        | Liz Osborne      | 12/4/17         | Plan Revision   | August           |
| TAYLOR          | Ben Stanfley     | 12/13/16        | Plan Revision   | December         |
| VILAS           | Carolyn Scholl   | 9/19/2017       | Plan Review     | April            |
| Forest          | Pam LaBine       |                 | Revisit         | August           |
| Richland        | Cathy Cooper     |                 | Revisit         | August           |

**DATE:** March 21, 2018

**TO:** Land and Water Conservation Board Members and Advisors

**FROM:** Keith Foye, DATCP *Keith Foye*  
Land and Water Resources Bureau Director

**SUBJECT:** DATCP extension of 2017 cost-share and other grants into 2018

**RECOMMENDED ACTION:** This is an action item. The LWCB should recommend the extension of \$1,988,609.65 in 2017 Bond and SEG grant funds for county cost-share projects into 2018. The LWCB should further recommend an extension of \$145,526.08 in 2017 SEG grant funds provided to the University of Wisconsin College of Agriculture and Life Sciences (UW CALS), University of Wisconsin–Extension (UW Extension), the Wisconsin Land and Water Conservation Association (WI Land+Water), and eleven recipients of Nutrient Management Farmer Education (NMFE) grants, collectively referred to as Other Project Cooperators (OPCs), into 2018.

**DATCP ACTION ON COST-SHARE EXTENSION REQUESTS:** Counties may request a one year extension for cost-share projects if their requests meet s. ATCP 50.34(6), Wis. Admin. Code and they have funds remaining to extend.

Attachment A1 is an aggregate of the dollar amounts for all county extension requests for SEG and Bond funded projects, providing the total dollar amount recommended for extensions in each category. By signing Attachment A1, the Secretary approves the total extension amounts for each county by fund type, and also the extension amounts for OPCs. Extended cost-share funds become pooled and available for use to pay costs related to any extended project cost-shared with the same fund type.

In Attachment A2, county extension requests are divided into two groups based on the type of funds (Bond or SEG) used to cost-share the project. Detailed within each group are the projects for which a county has requested an extension along with the specific amount of cost-share funds the county would like to extend. In regard to each project for which an extension is requested, DATCP may take any of the following actions:

1. Extend the project for the amount requested.
2. Extend the project for an amount less than the amount requested if the county lacks the remaining funds to cover its request or requests less than the contract amount.
3. Not extend the project if the county was fully reimbursed for the project after submitting its extension request.
4. Deny the extension request for other reasons.

DATCP records the specific action taken for each project in the gray-shaded columns in Attachment A2.

Table 1, organized by fund type, contains the total number of (1) the extension requests submitted by counties, (2) the projects recommended for extension, (3) projects for which an extension is not necessary because the county received reimbursement pending action on an extension request, and (4) projects not extended for other reasons.

| EXTENSION REQUESTS SUBMITTED* |     | PROJECTS RECOMMENDED FOR EXTENSION** |     | PROJECTS REIMBURSED AFTER REQUEST SUBMITTED |     | PROJECTS NOT EXTENDED FOR OTHER REASONS |     |
|-------------------------------|-----|--------------------------------------|-----|---|-----|---|-----|
| Bond                          | SEG | Bond                                 | SEG | Bond  | SEG | Bond                                    | SEG |
| 198                           | 194 | 190                                  | 182 | 8   | 12  | 0                                       | 0   |

\*Counties may withdraw extension requests and these are not counted in the total of requests submitted.  
 \*\*Specific extension amounts are listed in Attachment A.

Chart 2A (see attached) contains a five-year history of BOND allocations, extension requests and unspent funds. Chart 2B (see attached) contains a five-year history of the SEG allocations, extension requests and unspent funds.

**DATCP ACTION ON OPC REQUESTS FOR EXTENSIONS:** Cooperators may request one-year extensions of their projects pursuant to s. ATCP 50.35. DATCP will take the following actions regarding extension requests received from cooperators:

**UW CALS** requested an extension of \$19,122.43 for the Soil Nutrient Application Program-Plus (SNAP-Plus) and Nutrient Management Education, Outreach and Implementation. DATCP recommending an extension of \$19,122.43, which is remaining unspent balance.

**UW Extension** requested an extension of \$13,729.41 for coordination, education and outreach communication responsibilities. DATCP recommending an extension of \$13,729.41, which is remaining unspent balance.

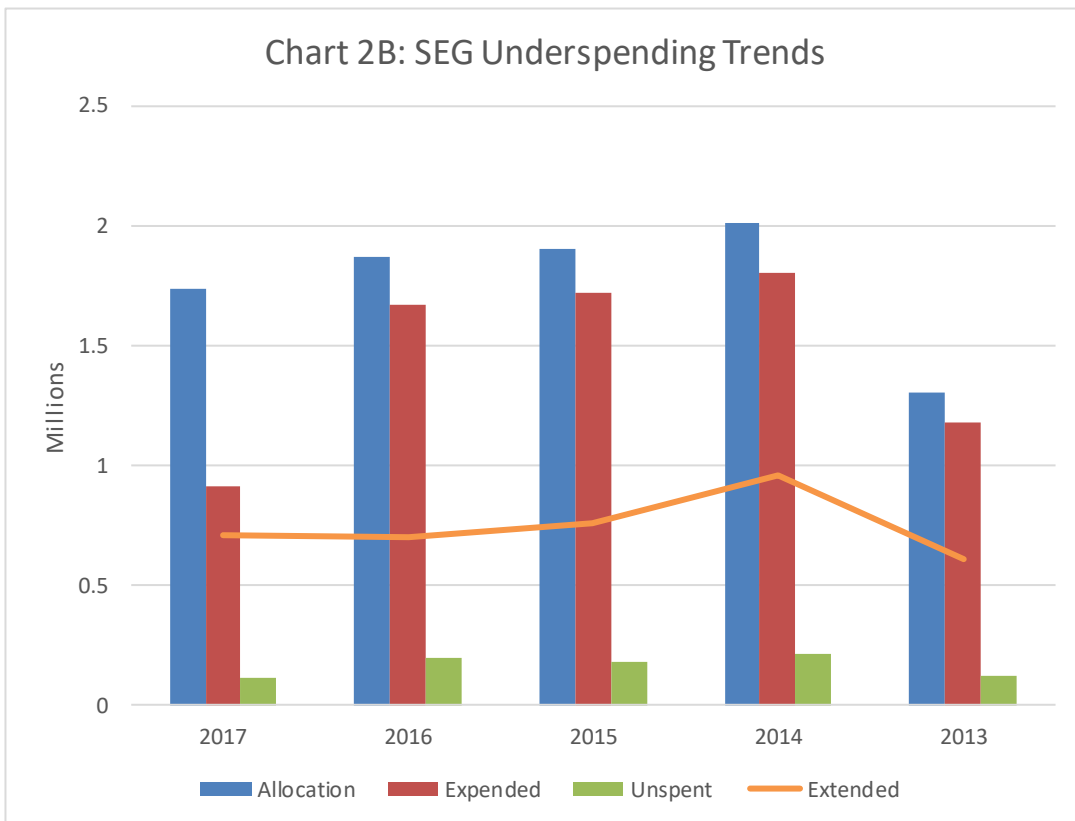
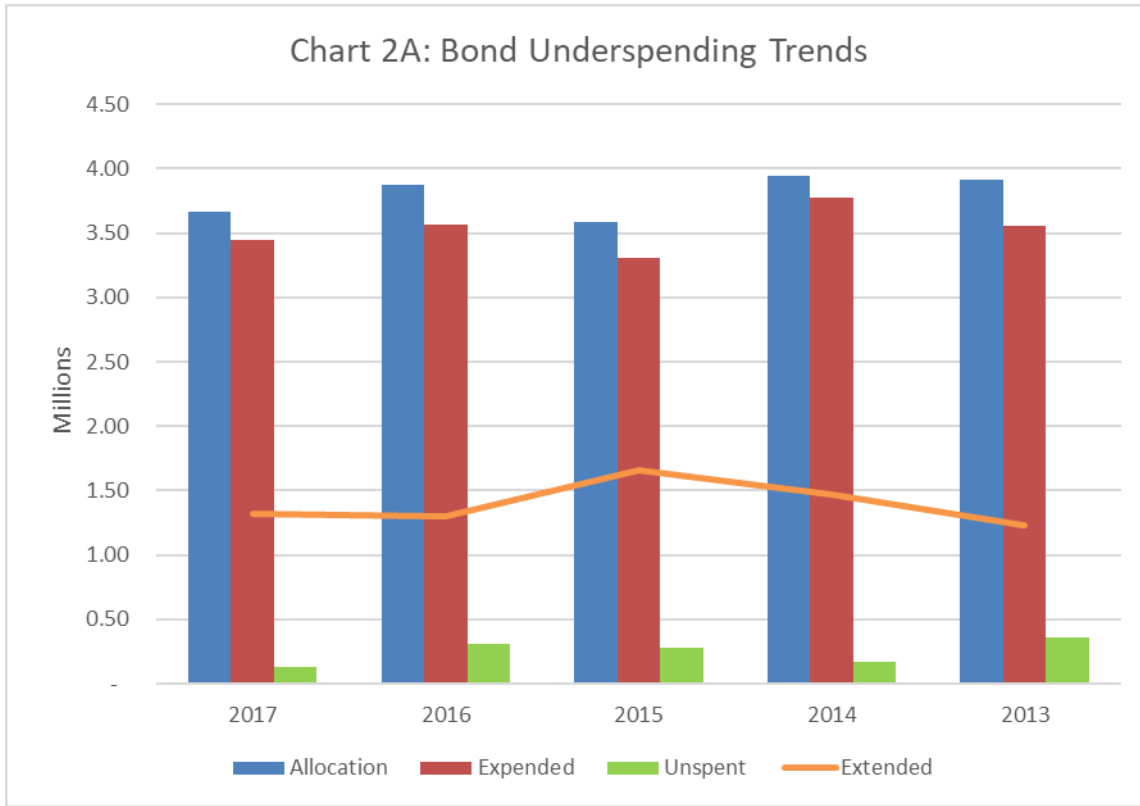
**WI Land+Water** requested an extension of \$29,917.73 involving its statewide training support, county accountability, facilitation of statewide conservation goals, and related support activities. DATCP is recommending an extension of \$29,917.73, which is the remaining unspent balance.

**NMFE** grant recipients requested a total extension of \$82,756.51 for statewide nutrient management farmer education trainings as follows: Calumet County (\$1,250); Columbia County (\$1,131.51); Clark, Marathon, Taylor, Lincoln, Wood Counties (\$1,150); Chippewa Valley Technical College (\$15,100); Dane County (\$2,000); Eau Claire County (\$6,600); Lafayette County (\$11,350); Southwest Wisconsin Technical College (\$15,950); Trempealeau County (\$14,450); Waushara County (\$12,310); and Ozaukee County (\$1,465). DATCP is recommending an extension of \$82,756.51, which is the remaining unspent balance.

**MATERIALS PROVIDED:**

- Chart 2A, Chart2B: Bond/SEG Allocated and Extended Unspent Funds
- Attachment A1: Addendum to 2018 Joint Final Allocation Plan
- Attachment A2: Extension of SWRM Grant Projects from 2017 to 2018 (for Bond and SEG Funds)

**PRESENTER:** Richard Castelnuovo, DATCP



## ADDENDUM TO 2018 JOINT FINAL ALLOCATION PLAN (April 2018)

| <b>Bond Cost-Share</b> |  |   |
|------------------------|--|---|
| <b>County</b>          | <b>Total LWRM Requests for Extension</b> | <b>Total Recommended to be Approved for Extension</b> |
| Adams                  | \$28,325.70                              | \$28,325.70   |
| Barron                 | \$25,276.93                              | \$25,108.85   |
| Bayfield               | \$21,798.70                              | \$21,798.70   |
| Brown                  | \$16,943.50                              | \$16,943.50   |
| Buffalo                | \$39,921.00                              | \$38,431.98   |
| Burnett                | \$16,000.00                              | \$16,000.00   |
| Calumet                | \$11,346.20                              | \$11,190.89   |
| Chippewa               | \$43,234.88                              | \$43,234.88   |
| Clark                  | \$39,670.00                              | \$16,885.34   |
| Columbia               | \$8,700.00                               | \$6,710.90  |
| Crawford               | \$33,916.00                              | \$32,076.22   |
| Dane                   | \$8,013.95                               | \$1,539.69  |
| Dodge                  | \$11,074.00                              | \$3,073.00  |
| Douglas                | \$20,000.00                              | \$20,000.00   |
| Dunn                   | \$5,778.00                               | \$2,930.00  |
| Eau Claire             | \$20,237.50                              | \$17,094.39   |
| Fond du Lac            | \$24,101.33                              | \$13,713.53   |
| Grant                  | \$9,718.45                               | \$9,718.45  |
| Green                  | \$20,960.98                              | \$20,960.73   |
| Iowa                   | \$17,899.79                              | \$17,899.79   |
| Iron                   | \$20,486.93                              | \$20,486.93   |
| Jackson                | \$76,540.00                              | \$43,695.31   |
| Jefferson              | \$32,480.00                              | \$31,010.00   |
| Kenosha                | \$37,030.00                              | \$37,030.00   |
| Kewaunee               | \$41,827.10                              | \$24,497.27   |
| La Crosse              | \$39,690.50                              | \$39,690.50   |
| Lafayette              | \$1,630.00                               | \$1,630.00  |
| Langlade               | \$15,473.90                              | \$15,473.90   |
| Lincoln                | \$37,019.12                              | \$34,720.70   |
| Manitowoc              | \$1,225.00                               | \$1,225.00  |
| Marathon               | \$67,267.25                              | \$67,151.62   |
| Marinette              | \$105,491.28                             | \$38,993.28   |
| Marquette              | \$44,082.00                              | \$44,082.00   |
| Monroe                 | \$1,449.01                               | \$1,449.01  |
| Oneida                 | \$27,500.00                              | \$27,500.00   |
| Outagamie              | \$38,666.50                              | \$38,666.50   |
| Ozaukee                | \$4,212.27                               | \$4,212.27  |
| Pepin                  | \$6,661.00                               | \$6,376.51  |
| Pierce                 | \$45,819.61                              | \$45,819.41   |
| Polk                   | \$47,796.00                              | \$47,796.00   |
| Portage                | \$15,329.05                              | \$9,681.80  |
| Price                  | \$23,195.00                              | \$23,195.00   |
| Racine                 | \$2,311.34                               | \$2,311.34  |



**ADDENDUM TO 2018 JOINT FINAL ALLOCATION PLAN (April 2018)**

|                                     |                       |                       |
|-------------------------------------|-----------------------|-----------------------|
| Richland                            | \$22,509.71           | \$22,509.71           |
| Rock                                | \$12,797.52           | \$12,797.52           |
| Rusk                                | \$28,778.00           | \$25,705.00           |
| Saint Croix                         | \$9,211.55            | \$2.00                |
| Sauk                                | \$29,204.12           | \$29,204.12           |
| Sawyer                              | \$14,561.93           | \$14,561.93           |
| Shawano                             | \$7,787.30            | \$7,787.30            |
| Sheboygan                           | \$11,300.00           | \$11,300.00           |
| Taylor                              | \$25,732.93           | \$25,732.93           |
| Vernon                              | \$22,127.00           | \$22,127.00           |
| Vilas                               | \$19,622.00           | \$18,572.00           |
| Walworth                            | \$22,120.00           | \$19,237.69           |
| Washburn                            | \$14,362.00           | \$6,767.30            |
| Washington                          | \$6,180.00            | \$2,857.91            |
| Waukesha                            | \$5,000.00            | \$5,000.00            |
| Waupaca                             | \$60,809.46           | \$12,993.46           |
| Waushara                            | \$74,265.25           | \$16,079.03           |
| Winnebago                           | \$25,082.15           | \$22,077.00           |
| Wood                                | \$37,000.00           | \$30,540.00           |
| <b>Total County Bond Cost-Share</b> | <b>\$1,604,550.69</b> | <b>\$1,276,182.79</b> |

## ADDENDUM TO 2018 JOINT FINAL ALLOCATION PLAN (April 2018)

| <b>SEG Cost-Share</b>              |  |   |
|------------------------------------|--|---|
| <b>County</b>                      | <b>Total LWRM Requests for Extension</b> | <b>Total Recommended to be Approved for Extension</b> |
| Adams                              | \$8,680.00                               | \$6,076.00  |
| Barron                             | \$25,168.00                              | \$25,168.00   |
| Bayfield                           | \$8,400.00                               | \$8,400.00  |
| Brown                              | \$4,353.20                               | \$4,353.20  |
| Burnett                            | \$18,383.00                              | \$9,342.96  |
| Calumet                            | \$66,820.00                              | \$58,910.00   |
| Chippewa                           | \$14,280.00                              | \$9,996.00  |
| Clark                              | \$3,880.00                               | \$3,880.00  |
| Crawford                           | \$17,200.00                              | \$8,600.00  |
| Dane                               | \$58,128.00                              | \$43,151.96   |
| Door                               | \$2,277.60                               | \$2,277.60  |
| Fond du Lac                        | \$29,032.00                              | \$24,000.00   |
| Green Lake                         | \$43,624.00                              | \$28,000.00   |
| Iowa                               | \$13,008.00                              | \$11,388.00   |
| Kewaunee                           | \$2,880.00                               | \$2,880.00  |
| Langlade                           | \$7,232.00                               | \$5,063.12  |
| Manitowoc                          | \$8,922.50                               | \$8,555.00  |
| Marathon                           | \$76,165.96                              | \$49,512.76   |
| Marquette                          | \$44,657.20                              | \$21,019.04   |
| Monroe                             | \$4,760.00                               | \$4,760.00  |
| Outagamie                          | \$13,070.00                              | \$9,149.00  |
| Pepin                              | \$5,280.00                               | \$3,696.00  |
| Pierce                             | \$19,560.00                              | \$15,000.00   |
| Racine                             | \$34,522.00                              | \$34,522.00   |
| Richland                           | \$12,600.00                              | \$12,600.00   |
| Rock                               | \$74,741.70                              | \$66,308.30   |
| Sauk                               | \$1,960.00                               | \$1,960.00  |
| Sheboygan                          | \$18,848.00                              | \$2,840.00  |
| Taylor                             | \$29,692.00                              | \$28,001.20   |
| Vernon                             | \$58,472.00                              | \$58,472.00   |
| Walworth                           | \$22,564.00                              | \$20,020.00   |
| Washington                         | \$14,188.00                              | \$9,931.60  |
| Waupaca                            | \$71,876.00                              | \$59,304.40   |
| Waushara                           | \$33,880.00                              | \$20,000.00   |
| Winnebago                          | \$27,081.20                              | \$27,081.20   |
| Wood                               | \$31,980.20                              | \$8,207.52  |
| <b>Total County SEG Cost-Share</b> | <b>\$928,166.56</b>                      | <b>\$712,426.86</b>                                   |

## ADDENDUM TO 2018 JOINT FINAL ALLOCATION PLAN (April 2018)

| <b>Fund: SEG</b>                               |   |   |
|--|---|---|
| <b>Other Project Cooperators</b>               | <b>Total OPC Requests for Extension</b> | <b>Total Recommended to be Approved for Extension</b> |
| NMFE Calumet County                            | \$1,250.00                              | \$1,250.00  |
| NMFE Columbia County                           | \$1,131.51                              | \$1,131.51  |
| NMFE Chippewa Valley Tech College              | \$15,100.00                             | \$15,100.00   |
| NMFE Dane County                               | \$2,000.00                              | \$2,000.00  |
| NMFE Eau Claire County                         | \$6,600.00                              | \$6,600.00  |
| NMFE Lafayette County                          | \$11,350.00                             | \$11,350.00   |
| NMFE Ozaukee County                            | \$1,465.00                              | \$1,465.00  |
| NMFE SW Tech College                           | \$15,950.00                             | \$15,950.00   |
| NMFE Taylor County et al                       | \$1,150.00                              | \$1,150.00  |
| NMFE Trempealeau County                        | \$14,450.00                             | \$14,450.00   |
| NMFE Waushara County                           | \$12,310.00                             | \$12,310.00   |
| UW CALS  | \$19,122.43                             | \$19,122.43   |
| UW Extension                                   | \$13,729.41                             | \$13,729.41   |
| WI Land & Water                                | \$29,917.73                             | \$29,917.73   |
| <b>Total Other Project Cooperators<br/>SEG</b> | <b>\$145,526.08</b>                     | <b>\$145,526.08</b>                                   |

| <b>Entity</b>                    | <b>Total LWRM and OPC Requests for Extension</b> | <b>Total Recommended to be Approved for Extension</b> |
|----------------------------------|--|---|
| <b>County Cost-Share</b>         | \$2,532,717.25                                   | \$1,988,609.65  |
| <b>Other Project Cooperators</b> | \$145,526.08                                     | \$145,526.08  |
| <b>Grand Totals</b>              | <b>\$2,678,243.33</b>                            | <b>\$2,134,135.73</b>                                 |

Approved:

Sheila Harsdorf, DATCP Secretary

Date

## 2018 SOIL AND WATER RESOURCE MANAGEMENT GRANT PROJECT EXTENSIONS

## Fund CS Bond

| County   | CSA #        | Name  | Reason* | Request     | Recommended Approval Amount | Explanation of Difference between Request and Recommended Approval Amount |
|----------|--------------|---|---------|-------------|-----------------------------|---|
| Adams    | SWRM 2017-02 | Adams County Administrative Finance Committee | A       | \$13,504.60 | \$13,504.60                 |   |
| Adams    | SWRM 2017-06 | Andre & Karissa Weaver                        | A       | \$14,821.10 | \$14,821.10                 |   |
| Barron   | 17BC013      | Norman H & Judith A Busse                     | A       | \$14,059.43 | \$14,059.43                 |   |
| Barron   | 17BC038      | Anthony D, Thomas R & Bridget Posta           | A       | \$6,125.00  | \$6,125.00                  |   |
| Barron   | 17BC047      | Robert G & Leondra K Lentz                    | A       | \$2,569.00  | \$2,400.92                  | Request exceeded current year allocation.                                 |
| Barron   | 17BC048      | Richard W & Susan E Lentz                     | A       | \$2,523.50  | \$2,523.50                  |   |
| Bayfield | BCLW-10-17   | Thomas Jr Gazdik                              | A       | \$272.50    | \$272.50                    |   |
| Bayfield | BCLW-13-17   | Michael J Mlynarek                            | A       | \$9,560.63  | \$9,560.63                  |   |
| Bayfield | BCLW-15-17   | Brad & Melissa Giesregen                      | A       | \$11,965.57 | \$11,965.57                 |   |
| Brown    | LWP-290      | Steven J & Mary E Olsen                       | A       | \$9,016.00  | \$9,016.00                  |   |
| Brown    | LWP-291      | Conrad M & Lisa M Liebergen                   | A       | \$7,927.50  | \$7,927.50                  |   |
| Buffalo  | LWRM 02/2017 | Curtis & Mark Noll                            | A       | \$4,287.50  | \$4,287.50                  |   |
| Buffalo  | LWRM 03/2017 | Clyde & Debbie Gumbert                        | A       | \$2,450.00  | \$2,450.00                  |   |
| Buffalo  | LWRM 04/2017 | Michael V Anibas Revocable Trust              | A       | \$8,907.50  | \$8,907.50                  |   |
| Buffalo  | LWRM 05/2017 | Dam View Farm LLC                             | A       | \$5,600.00  | \$5,600.00                  |   |
| Buffalo  | LWRM 06/2017 | Robert P Larson                               | A       | \$7,861.00  | \$7,861.00                  |   |
| Buffalo  | LWRM 07/2017 | Larry Michaels                                | A       | \$2,800.00  | \$2,800.00                  |   |
| Buffalo  | LWRM 08/2017 | Johann A Bragger                              | A       | \$8,015.00  | \$6,525.98                  | Request exceeded current year allocation.                                 |
| Burnett  | 2017-03      | Michael L & Marilyn L Durand                  | A       | \$8,398.52  | \$8,398.52                  |   |
| Burnett  | 2017-10      | Fieldstone Family Farm LLC                    | A       | \$7,601.48  | \$7,601.48                  |   |
| Calumet  | 2017-1       | David & Lisa Mueller                          | A       | \$2,358.20  | \$2,358.20                  |   |
| Calumet  | 2017-5       | Alan C Zarnoth                                | A       | \$8,988.00  | \$8,832.69                  | Request exceeded current year allocation.                                 |
| Chippewa | EC101-2017   | North Road Dairy LLC                          | A       | \$8,366.30  | \$8,366.30                  |   |
| Chippewa | SH105-2      | David J & Diane R Antczak Trust               | A       | \$19,189.28 | \$19,189.28                 |   |
| Chippewa | TC123-2017   | Steven & Krystle Mayer                        | C       | \$8,366.30  | \$8,366.30                  |   |
| Chippewa | TR117-2017E  | Bryon & Lisa Swoboda                          | A       | \$3,813.00  | \$3,813.00                  |   |
| Chippewa | YR-120       | Steven & Amy Roth                             | A       | \$3,500.00  | \$3,500.00                  |   |
| Clark    | 2017-11      | Andrew & Melissa Nielsen                      | A       | \$5,880.00  | \$5,880.00                  |   |
| Clark    | 2017-18      | Robert Proksch                                | A       | \$13,650.00 | \$2,144.34                  | Request exceeded current year allocation.                                 |
| Clark    | 2017-20      | Gary & Brenda Lindner                         | A       | \$11,280.00 | \$1.00                      | Request exceeded current year allocation.                                 |
| Clark    | 2017-21      | Patricia Acheson                              | A       | \$8,860.00  | \$8,860.00                  |   |

## 2018 SOIL AND WATER RESOURCE MANAGEMENT GRANT PROJECT EXTENSIONS

|             |              |   |   |             |             |  |
|-------------|--------------|---|---|-------------|-------------|--|
| Columbia    | LW-08-17     | John & Dorothy Priske   | A | \$7,200.00  | \$5,210.90  | Request exceeded current year allocation.          |
| Columbia    | LW-12-17     | Floyd & Ella, Jerry & Delilah Herschberger & Otto                   | A | \$1,500.00  | \$1,500.00  |  |
| Crawford    | SWRM-02-2017 | Christopher Palm  | B | \$1,050.00  | \$1,050.00  |  |
| Crawford    | SWRM-06-2017 | Dennis & David Esser  | B | \$5,075.00  | \$5,075.00  |  |
| Crawford    | SWRM-07-2017 | Robert & Julie Morgan & Barezinsky                                  | B | \$4,340.00  | \$4,340.00  |  |
| Crawford    | SWRM-08-2017 | Trevor Riggs  | B | \$700.00    | \$700.00    |  |
| Crawford    | SWRM-09-2017 | Anthony & Kara Adams & Breems                                       | B | \$6,441.00  | \$6,441.00  |  |
| Crawford    | SWRM-10-2017 | Mark & Megan Pedretti   | B | \$6,860.00  | \$6,860.00  |  |
| Crawford    | SWRM-11-2017 | Pauls Farm LLC  | B | \$3,850.00  | \$3,850.00  |  |
| Crawford    | SWRM-12-2017 | Lazy K Inc  | A | \$3,850.00  | \$2,010.22  | Request exceeded current year allocation.          |
| Crawford    | SWRM-13-2017 | Aspenson Farms Inc  | A | \$1,750.00  | \$1,750.00  |  |
| Dane        | LWRM 12 2017 | Eugene P Gilles   | A | \$1,201.25  | \$0.00      | Project completed by 12/31. No extension required. |
| Dane        | LWRM 13 2017 | Dane County Parks   | B | \$6,000.00  | \$726.99    | Request exceeded current year allocation.          |
| Dane        | LWRM 8 2017  | Alan & Gerard, Mary Lisa Krantz, Campion-Krantz                     | A | \$812.70    | \$812.70    |  |
| Dodge       | LWR-2017-002 | Doug & Shannon Strehlow   | B | \$3,073.00  | \$3,073.00  |  |
| Dodge       | LWR-2017-009 | Gary R & Cindy M Fredrick   | B | \$8,001.00  | \$0.00      | Project completed by 12/31. No extension required. |
| Douglas     | 2017-01-LWRM | Anthony J Jr & Bette A Spilotro                                     | A | \$4,000.00  | \$4,000.00  |  |
| Douglas     | 2017-02-LWRM | Richard L & Sharon A Hoch   | A | \$3,000.00  | \$3,000.00  |  |
| Douglas     | 2017-03-LWRM | Jon E & Paula L Aamodt  | B | \$6,500.00  | \$6,500.00  |  |
| Douglas     | 2017-04-LWRM | Mary Jo Olsen Life Estate   | B | \$6,500.00  | \$6,500.00  |  |
| Dunn        | LWRP-2017-11 | Baier Creek Farms Inc   | A | \$1,190.00  | \$1,190.00  |  |
| Dunn        | LWRP-2017-12 | Thomas L & Robyn J Shipley  | B | \$560.00    | \$560.00    |  |
| Dunn        | LWRP-2017-13 | Roger Kassera   | A | \$4,028.00  | \$1,180.00  | Request exceeded current year allocation.          |
| Eau Claire  | BD-17-04     | John Eland  | A | \$10,132.40 | \$6,989.29  | Request exceeded current year allocation.          |
| Eau Claire  | BD-17-05     | Matthew & Jeanette Andre & Kelly                                    | A | \$7,217.60  | \$7,217.60  |  |
| Eau Claire  | BD-17-06     | Dean, Gregory, Timothy Anderson                                     | A | \$1,949.50  | \$1,949.50  |  |
| Eau Claire  | BD-17-07     | Brian & Kelly Schwoch   | A | \$938.00    | \$938.00    |  |
| Fond du Lac | 625-2017     | Rosemary Steffes  | B | \$599.00    | \$0.00      | Project completed by 12/31. No extension required. |
| Fond du Lac | 634-2017     | Brian J Birschbach  | B | \$546.00    | \$546.00    |  |
| Fond du Lac | 636-2017     | Marianne Schaezel   | B | \$1,141.00  | \$1,141.00  |  |
| Fond du Lac | 640-2017     | Michael E, Beatrice M, Rhonda J & Alan A Roehrig & Broege & Roehrig | B | \$21,815.33 | \$12,026.53 | Portion of requested extension has been paid.      |
| Grant       | 2017-05      | Ron & Deb Bomkamp   | B | \$1,000.00  | \$1,000.00  |  |
| Grant       | 2017-11      | Carl & Beth Abing   | B | \$8,718.45  | \$8,718.45  |  |
| Green       | 17-100       | Dan & Maureen Reeson  | B | \$20,960.98 | \$20,960.73 | Request exceeded current year allocation.          |

## 2018 SOIL AND WATER RESOURCE MANAGEMENT GRANT PROJECT EXTENSIONS

|           |               |                                      |   |             |             |  |
|-----------|---------------|--------------------------------------|---|-------------|-------------|--|
| Iowa      | LW-17-09      | Jordan & Lois Johnson                | C | \$3,290.00  | \$3,290.00  |  |
| Iowa      | LW-17-10      | Bruce & Linda Womack                 | C | \$4,427.50  | \$4,427.50  |  |
| Iowa      | LW-17-11      | Star Valley Ranch LLC                | A | \$3,199.70  | \$3,199.70  |  |
| Iowa      | LW-17-12      | Kittleson Valley Hardwoods LLC       | A | \$3,934.00  | \$3,934.00  |  |
| Iowa      | LW-17-13      | Brady & Judy Yager                   | A | \$3,048.59  | \$3,048.59  |  |
| Iron      | 2017-02-LWRM  | James Clement                        | A | \$5,464.20  | \$5,464.20  |  |
| Iron      | 2017-03-LWRM  | Iron County Forestry                 | C | \$15,022.73 | \$15,022.73 |  |
| Jackson   | 2017-233      | Roger W, Michael T, & Julie F Hansen | A | \$4,300.00  | \$4,300.00  |  |
| Jackson   | 2017-234      | Derek J Knutson                      | A | \$2,830.00  | \$2,830.00  |  |
| Jackson   | 2017-235      | Patricia & Edward Davis              | A | \$5,010.00  | \$5,010.00  |  |
| Jackson   | 2017-242      | Kay W & Arlan R Spors                | A | \$28,000.00 | \$11,254.31 | Request exceeded current year allocation.          |
| Jackson   | 2017-246      | Three Rivers Housing LLC             | A | \$16,100.00 | \$1.00      | Request exceeded current year allocation.          |
| Jackson   | 2017-247      | Sara I, William J, Samuel A McNulty  | A | \$9,800.00  | \$9,800.00  |  |
| Jackson   | 2017-248      | Michael A Larson                     | A | \$5,600.00  | \$5,600.00  |  |
| Jackson   | 2017-249      | Ilka Inc                             | A | \$4,900.00  | \$4,900.00  |  |
| Jefferson | LW-03-17      | Anthony & Dorothy Mueller            | B | \$1,470.00  | \$0.00      | Project completed by 12/31. No extension required. |
| Jefferson | LW-04-17      | David Hughes                         | B | \$11,200.00 | \$11,200.00 |  |
| Jefferson | LW-05-17      | Gregory T & Carol E Gitto            | B | \$9,800.00  | \$9,800.00  |  |
| Jefferson | LW-06-17      | Steven & Debra Magritz               | B | \$10,010.00 | \$10,010.00 |  |
| Kenosha   | ANDERSON-2017 | Roy & Diane Anderson                 | A | \$15,638.00 | \$15,638.00 |  |
| Kenosha   | GEYSO-2017    | Gerald & Helen Geyso                 | A | \$6,097.00  | \$6,097.00  |  |
| Kenosha   | ROSSI-2017    | Anthony Rossi & Sons LLP             | A | \$15,295.00 | \$15,295.00 |  |
| Kewaunee  | 17-325        | Mark D & Rachel L LeCaptain          | B | \$5,250.00  | \$5,250.00  |  |
| Kewaunee  | 17-326        | Brent W & Dixie L Eisenman           | B | \$36,577.10 | \$19,247.27 | Request exceeded current year allocation.          |
| La Crosse | SWRM 17-02    | Ralph & Bonnie Jones                 | A | \$4,000.00  | \$4,000.00  |  |
| La Crosse | SWRM 17-03    | Michael C & Debra L Best             | A | \$4,000.00  | \$4,000.00  |  |
| La Crosse | SWRM 17-04    | Dirk & Tracy Mulder                  | A | \$3,000.00  | \$3,000.00  |  |
| La Crosse | SWRM 17-05    | Michael H & Pamela S Robson          | A | \$3,820.00  | \$3,820.00  |  |
| La Crosse | SWRM 17-06    | Three Brothers Coulee Farm LLC       | A | \$2,404.00  | \$2,404.00  |  |
| La Crosse | SWRM 17-07    | Dustin & Jodi Anderson               | A | \$12,600.00 | \$12,600.00 |  |
| La Crosse | SWRM 17-09    | Gregory H & Mary Sacia               | A | \$3,850.00  | \$3,850.00  |  |
| La Crosse | SWRM 17-10    | Scott & Vicki Brenstein              | A | \$6,016.50  | \$6,016.50  |  |
| Lafayette | 2017-501      | Louis & Kim Medina                   | B | \$630.00    | \$630.00    |  |
| Lafayette | 2017-502      | Schilling Farms LLC                  | B | \$1,000.00  | \$1,000.00  |  |

## 2018 SOIL AND WATER RESOURCE MANAGEMENT GRANT PROJECT EXTENSIONS

|           |              |  |   |             |             |   |
|-----------|--------------|--|---|-------------|-------------|---|
| Langlade  | 2017-02-AG   | Margaret Krause  | B | \$7,859.58  | \$7,859.58  |   |
| Langlade  | 2017-03-AG   | Margaret Krause  | B | \$7,614.32  | \$7,614.32  |   |
| Lincoln   | 2017-02      | Jamie S & Amy L Firme & Ollhoff                                    | A | \$23,719.12 | \$23,719.12 |   |
| Lincoln   | 2017-03      | Bruce & Mary Lou Klug  | B | \$13,300.00 | \$11,001.58 | Request exceeded current year allocation. |
| Manitowoc | 17-574       | Richard & Lori Knoflicek   | B | \$1,225.00  | \$1,225.00  |   |
| Marathon  | 2017-06      | Dean & Connie Jurisch  | B | \$14,230.00 | \$14,230.00 |   |
| Marathon  | 2017-08      | Jared Thorne   | B | \$7,854.30  | \$7,854.30  |   |
| Marathon  | 2017-12      | Richard & Vera Ebert & Bogusz                                      | B | \$574.00    | \$574.00    |   |
| Marathon  | 2017-21      | Dylan & Nellie & Lawrence II & Noreen Carlson & Rutecki & Woodward | B | \$44,608.95 | \$44,493.32 | Request exceeded current year allocation. |
| Marinette | LWP-31       | Jean Voeks   | A | \$15,190.00 | \$15,190.00 |   |
| Marinette | LWP-32       | Arren & Darren Rusch   | C | \$90,301.28 | \$23,803.28 | Request did not equal contract amount.    |
| Marquette | 13-17        | Hockerman Bros Inc   | A | \$44,082.00 | \$44,082.00 |   |
| Monroe    | 399-2017     | Carrol & Mary Wallerman Revocable Trust                            | A | \$543.38    | \$543.38    |   |
| Monroe    | 400-2017     | David & Amanda Wallerman   | A | \$905.63    | \$905.63    |   |
| Oneida    | 2017-02      | Town of Lynne  | A | \$20,000.00 | \$20,000.00 |   |
| Oneida    | 2017-A       | Ken & Kathy Brice  | A | \$7,500.00  | \$7,500.00  |   |
| Outagamie | 2017-LWRM-14 | Scott Heiman   | A | \$29,400.00 | \$29,400.00 |   |
| Outagamie | 2017-LWRM-28 | Derald Ossmann   | A | \$9,266.50  | \$9,266.50  |   |
| Ozaukee   | 2017-03      | Donald G Burhop  | B | \$4,212.27  | \$4,212.27  |   |
| Pepin     | 492-LWRM-17  | Jeff & Pauline Myers   | A | \$2,611.00  | \$2,611.00  |   |
| Pepin     | 494-LWRM-17  | Patrick & Jean Carlisle  | A | \$4,050.00  | \$3,765.51  | Request did not equal contract amount.    |
| Pierce    | 10LWRM2017   | Charles R & Rosanne Matzek Life Estate                             | A | \$1,820.00  | \$1,820.00  |   |
| Pierce    | 16LWRM2017   | Robert & Katja Wirth   | A | \$1,750.00  | \$1,750.00  |   |
| Pierce    | 19LWRM2017   | Anna M Crownhart Revocable Trust                                   | A | \$3,010.00  | \$3,010.00  |   |
| Pierce    | 20LWRM2017   | Joseph A Dohmen  | A | \$7,630.00  | \$7,630.00  |   |
| Pierce    | 28LWRM2017   | Howard & Sandra M Larson   | A | \$15,604.40 | \$15,604.40 |   |
| Pierce    | 29LWRM2017   | Nathan T & JoAnn L Place Revocable Trust                           | A | \$13,555.21 | \$13,555.01 | Request exceeded current year allocation. |
| Pierce    | 35LWRM2017   | Stephen J & Mary L Traynor   | B | \$2,450.00  | \$2,450.00  |   |
| Polk      | LWRD-17-173  | Nicholas & Nicole Johnson  | A | \$37,310.00 | \$37,310.00 |   |
| Polk      | LWRD-17-174  | Thomas & Emily Hengst  | A | \$10,486.00 | \$10,486.00 |   |
| Portage   | 17-06        | Justmann Land Co LLC   | A | \$9,000.00  | \$9,000.00  |   |
| Portage   | 17-07        | Somers Management LLC  | A | \$6,329.05  | \$681.80    | Request exceeded current year allocation. |
| Price     | LW-17-07     | UPD Land Co LLC  | A | \$23,195.00 | \$23,195.00 |   |
| Racine    | LWRM 270     | JJKK Investments LLC   | B | \$2,311.34  | \$2,311.34  |   |

## 2018 SOIL AND WATER RESOURCE MANAGEMENT GRANT PROJECT EXTENSIONS

|             |            |   |   |             |             |  |
|-------------|------------|---|---|-------------|-------------|--|
| Richland    | 4-17       | Rita J & John Hoffmann                        | A | \$8,018.50  | \$8,018.50  |  |
| Richland    | 5-17       | Eugene & Cheryl Hilby                         | C | \$7,000.00  | \$7,000.00  |  |
| Richland    | 6-17       | Earl B & Betty M Wallace                      | A | \$7,491.21  | \$7,491.21  |  |
| Rock        | LR-040.17  | Tom & Donna Sayre Farms LLC                   | B | \$7,000.00  | \$7,000.00  |  |
| Rock        | LR-041.17  | Martin R Newhouse                             | B | \$5,797.52  | \$5,797.52  |  |
| Rusk        | LW-04-17   | Lillian M Kern                                | A | \$13,410.00 | \$13,410.00 |  |
| Rusk        | LW-05-17   | Steven & Joanne Styczynski                    | A | \$15,368.00 | \$12,295.00 | Request exceeded current year allocation.          |
| Saint Croix | SCC-17-381 | Mike Dorwin                                   | A | \$5,880.00  | \$1.00      | Request exceeded current year allocation.          |
| Saint Croix | SCC-17-383 | Samuel Erickson                               | B | \$3,331.55  | \$1.00      | Request exceeded current year allocation.          |
| Sauk        | LW-17-02   | Robert G & Judy Pesz Pesz Living Trust        | B | \$3,750.00  | \$3,750.00  |  |
| Sauk        | LW-17-03   | Kurt W Meister                                | B | \$1,653.50  | \$1,653.50  |  |
| Sauk        | LW-17-06   | Susan, Asquith Hanley et al                   | B | \$1,610.00  | \$1,610.00  |  |
| Sauk        | LW-17-09   | George & Barbara Foss                         | B | \$550.00    | \$550.00    |  |
| Sauk        | LW-17-10   | Herman Neuheisel Revocable Trust              | B | \$10,640.00 | \$10,640.00 |  |
| Sauk        | LW-17-11   | Alvin & Freida Helmuth                        | B | \$11,000.62 | \$11,000.62 |  |
| Sawyer      | LW-17-01   | Thomas R Shuman                               | B | \$8,401.93  | \$8,401.93  |  |
| Sawyer      | LW-17-05   | Vince A & Jean Volkey                         | C | \$6,160.00  | \$6,160.00  |  |
| Shawano     | 59-17-05   | David D Prey Irrevocable Trust                | C | \$7,787.30  | \$7,787.30  |  |
| Sheboygan   | 240        | Sheboygan County Planning & Conservation Dept | A | \$11,300.00 | \$11,300.00 |  |
| Taylor      | LWP-17-02  | Brody & Jeremy Mahr                           | B | \$482.30    | \$482.30    |  |
| Taylor      | LWP-17-07  | Peter & Julie Thums                           | B | \$4,375.00  | \$4,375.00  |  |
| Taylor      | LWP-17-11  | Lukas & Renee McAlpine                        | A | \$7,426.43  | \$7,426.43  |  |
| Taylor      | LWP-17-12  | Kyle Hill                                     | A | \$12,529.20 | \$12,529.20 |  |
| Taylor      | LWP-17-14  | Town of Cleveland                             | B | \$625.00    | \$625.00    |  |
| Taylor      | LWP-17-15  | John & Katherine Zuleger                      | A | \$295.00    | \$295.00    |  |
| Vernon      | 2017-03    | Fred Rogers                                   | A | \$6,036.80  | \$6,036.80  |  |
| Vernon      | 2017-20    | Daniel Badtke                                 | A | \$2,240.00  | \$2,240.00  |  |
| Vernon      | 2017-22    | Joey Amberg                                   | A | \$4,172.00  | \$4,172.00  |  |
| Vernon      | 2017-23    | Jason & Rebekah Rider                         | A | \$1,155.00  | \$1,155.00  |  |
| Vernon      | 2017-25    | Gary & Sharon Leatherberry                    | A | \$5,938.00  | \$5,938.00  |  |
| Vernon      | 2017-26    | Gloria J Binger Trust                         | A | \$2,585.20  | \$2,585.20  |  |
| Vilas       | 2017-01    | Gregory J Wilson Revocable Trust              | A | \$1,050.00  | \$0.00      | Project completed by 12/31. No extension required. |
| Vilas       | 2017-02    | Anne Brouwer                                  | C | \$5,500.00  | \$5,500.00  |  |
| Vilas       | 2017-04    | Phelps Historical Museum, Inc                 | C | \$322.00    | \$322.00    |  |



## 2018 SOIL AND WATER RESOURCE MANAGEMENT GRANT PROJECT EXTENSIONS

|               |              |   |                |                       |                       |  |
|---------------|--------------|---|----------------|-----------------------|-----------------------|--|
| Vilas         | 2017-05      | Daniel Draeger                                | A              | \$7,500.00            | \$7,500.00            |  |
| Vilas         | 2017-06      | Town of Manitowish Waters                     | C              | \$4,000.00            | \$4,000.00            |  |
| Vilas         | 2017-07      | Hillview Resort Condo                         | A              | \$1,250.00            | \$1,250.00            |  |
| Walworth      | LW17-07      | Vandell Farms, Inc                            | B              | \$5,250.00            | \$5,250.00            |  |
| Walworth      | LW17-10      | Holt Brothers, Inc                            | B              | \$10,500.00           | \$10,500.00           |  |
| Walworth      | LW17-11      | Kenneth J & Peggy S Stopple                   | A              | \$3,570.00            | \$3,486.69            | Request exceeded current year allocation.          |
| Walworth      | LW17-17      | C & C Farms, LLC                              | A              | \$2,800.00            | \$1.00                | Request exceeded current year allocation.          |
| Washburn      | 65-17-06     | Legacy Farms, LLC                             | A              | \$4,200.00            | \$4,200.00            |  |
| Washburn      | 66-17-09     | David B & Jennifer A Marker                   | A              | \$10,162.00           | \$2,567.30            | Request exceeded current year allocation.          |
| Washington    | LWRM-17-01   | Gary J & Cheryl R Bell                        | A              | \$2,540.00            | \$2,540.00            |  |
| Washington    | LWRM-17-02   | James D & Mary D Stout                        | A              | \$3,640.00            | \$317.91              | Request exceeded current year allocation.          |
| Waukesha      | SWRM-2017-23 | Waukesha County Dept of Parks & Land Use      | C              | \$5,000.00            | \$5,000.00            |  |
| Waupaca       | LW-17-04     | Scott Reetz                                   | A              | \$17,143.46           | \$0.00                | Project completed by 12/31. No extension required. |
| Waupaca       | LW-17-12     | Stephen, Jon & Bernard Bauer                  | A              | \$17,500.00           | \$12,991.46           | Request exceeded current year allocation.          |
| Waupaca       | LW-17-13     | Arthur L & Bobbie Jo Pethke                   | A              | \$3,906.00            | \$1.00                | Request exceeded current year allocation.          |
| Waupaca       | LW-17-14     | Wepner Farms                                  | A              | \$22,260.00           | \$1.00                | Request exceeded current year allocation.          |
| Waushara      | 70-17-01     | James W & Robert J Struck                     | A              | \$5,073.00            | \$0.00                | Project completed by 12/31. No extension required. |
| Waushara      | 70-17-02     | Dan & Monica Trudell                          | A              | \$5,016.00            | \$5,016.00            |  |
| Waushara      | 70-17-03     | David & Rachel Gorny                          | A              | \$2,576.25            | \$0.00                | Project completed by 12/31. No extension required. |
| Waushara      | 70-17-04     | David T Barbola                               | A              | \$5,000.00            | \$5,000.00            |  |
| Waushara      | 70-17-23     | John & Cynthia Jarvis                         | A              | \$6,200.00            | \$6,062.03            | Request exceeded current year allocation.          |
| Waushara      | 70-17-25     | Daneil & Jeanette Thom Family Revocable Trust | A              | \$50,400.00           | \$1.00                | Request exceeded current year allocation.          |
| Winnebago     | LW-17-02     | Arthur Busse Family Trust                     | A              | \$5,460.00            | \$5,460.00            |  |
| Winnebago     | LW-17-03     | Lynda & Gregory Kleinschmidt-Johnson          | A              | \$3,150.00            | \$3,150.00            |  |
| Winnebago     | LW-17-04     | Donald D & Alice M Himmler                    | A              | \$3,465.00            | \$3,465.00            |  |
| Winnebago     | LW-17-05     | David L & Jacqueline Ballwanz                 | A              | \$4,550.00            | \$4,550.00            |  |
| Winnebago     | LW-17-06     | Daniel Marohn                                 | A              | \$4,800.00            | \$4,800.00            |  |
| Winnebago     | LW-17-07     | Arthur Busse Survivors Trust                  | A              | \$3,657.15            | \$652.00              | Request exceeded current year allocation.          |
| Wood          | 17-LWRM-05   | Lee N Accola                                  | A              | \$7,000.00            | \$7,000.00            |  |
| Wood          | 17-LWRM-25   | Otter Creek Farms                             | A              | \$15,000.00           | \$15,000.00           |  |
| Wood          | 17-LWRM-26   | Stephen & Barbara Pankratz                    | A              | \$15,000.00           | \$8,540.00            | Request exceeded current year allocation.          |
| <b>Count:</b> | <b>198</b>   |   | <b>Totals:</b> | <b>\$1,604,550.69</b> | <b>\$1,276,182.79</b> |  |

## 2018 SOIL AND WATER RESOURCE MANAGEMENT GRANT PROJECT EXTENSIONS

## Fund CS SEG

| County   | CSA #       | Name                                       | Reason* | Request     | Recommended Approval Amount | Explanation of Difference between Request and Recommended Approval Amount |
|----------|-------------|--|---------|-------------|-----------------------------|---|
| Adams    | SEG 2017-01 | Wallendal Farms                            | C       | \$8,680.00  | \$6,076.00                  | Request exceeded current year allocation.                                 |
| Barron   | 17BC040     | Russell G & Pamela K Bruder                | A       | \$11,344.00 | \$11,344.00                 |   |
| Barron   | 17BC041     | Craig S & Lori K Hamernik                  | A       | \$5,076.00  | \$5,076.00                  |   |
| Barron   | 17BC042     | Cory J & Janelle M Picknell                | A       | \$1,620.00  | \$1,620.00                  |   |
| Barron   | 17BC043     | Gary L & Barbara J Picknell                | A       | \$2,552.00  | \$2,552.00                  |   |
| Barron   | 17BC044     | Picknell Farm LLC                          | A       | \$4,060.00  | \$4,060.00                  |   |
| Barron   | 17BC045     | Picknell Farm Land Holdings LLC            | A       | \$516.00    | \$516.00                    |   |
| Bayfield | BCSEG-01-17 | Matthew & Brianna Sechen                   | A       | \$8,400.00  | \$8,400.00                  |   |
| Brown    | NMSEG17-101 | Brian L Baenen                             | B       | \$4,353.20  | \$4,353.20                  |   |
| Burnett  | 2017-05     | Philip & Bonny Scheu                       | A       | \$1,074.08  | \$0.00                      | Project completed by 12/31. No extension required.                        |
| Burnett  | 2017-12     | Fogerty Trust                              | A       | \$4,228.00  | \$0.00                      | Project completed by 12/31. No extension required.                        |
| Burnett  | 2017-13     | Kent W & Kimberly Bassett                  | A       | \$2,968.00  | \$0.00                      | Project completed by 12/31. No extension required.                        |
| Burnett  | 2017-14     | Donald L & Karie A Taylor                  | A       | \$728.00    | \$0.00                      | Project completed by 12/31. No extension required.                        |
| Burnett  | 2017-15     | Wayne M & Jacalyn L Dahlstrom              | A       | \$9,384.92  | \$9,342.96                  | Request exceeded current year allocation.                                 |
| Calumet  | NM 17-01    | Donald & Sharon Binsfeld                   | A       | \$3,608.00  | \$3,608.00                  |   |
| Calumet  | NM 17-02    | Ledgerock Farm LLC                         | A       | \$7,728.00  | \$7,728.00                  |   |
| Calumet  | NM 17-03    | Joseph & Kathryn Meyer                     | A       | \$800.00    | \$800.00                    |   |
| Calumet  | NM 17-04    | Jeffrey Suttner                            | A       | \$360.00    | \$360.00                    |   |
| Calumet  | NM 17-05    | Harlee Suttner                             | A       | \$188.00    | \$188.00                    |   |
| Calumet  | NM 17-06    | Sherry Buechel                             | A       | \$720.00    | \$720.00                    |   |
| Calumet  | NM 17-07    | James Suttner                              | A       | \$680.00    | \$680.00                    |   |
| Calumet  | NM 17-09    | Kirk & Linda Eickhoff                      | A       | \$1,336.00  | \$1,336.00                  |   |
| Calumet  | NM 17-10    | Timothy & Dawn Pingel                      | A       | \$3,160.00  | \$3,160.00                  |   |
| Calumet  | NM 17-11    | Jane Zahn                                  | A       | \$108.00    | \$108.00                    |   |
| Calumet  | NM 17-12    | Daniel Rozman                              | A       | \$2,340.00  | \$2,340.00                  |   |
| Calumet  | NM 17-13    | Sarahs Farm LLC                            | A       | \$3,568.00  | \$3,568.00                  |   |
| Calumet  | NM 17-14    | Thomas Thurwachter                         | A       | \$600.00    | \$600.00                    |   |
| Calumet  | NM 17-15    | All Trades Farms LLC                       | A       | \$5,480.00  | \$5,480.00                  |   |
| Calumet  | NM 17-16    | Joseph & Christine Brantmeier              | A       | \$2,952.00  | \$2,952.00                  |   |
| Calumet  | NM 17-17    | Joseph & Christine Brantmeier Living Trust | A       | \$11,160.00 | \$3,250.00                  | Request exceeded current year allocation.                                 |
| Calumet  | NM 17-18    | Kenneth & Gloria Porsche                   | A       | \$628.00    | \$628.00                    |   |

## 2018 SOIL AND WATER RESOURCE MANAGEMENT GRANT PROJECT EXTENSIONS

|             |             |                                 |   |             |             |  |
|-------------|-------------|---------------------------------|---|-------------|-------------|--|
| Calumet     | NM 17-19    | Irvin Zahringer                 | A | \$5,192.00  | \$5,192.00  |  |
| Calumet     | NM 17-21    | Dietzens Stony Acres LLC        | A | \$2,208.00  | \$2,208.00  |  |
| Calumet     | NM 17-22    | Tracie Bornemann                | A | \$5,948.00  | \$5,948.00  |  |
| Calumet     | NM 17-23    | Timothy S Bornemann             | A | \$180.00    | \$180.00    |  |
| Calumet     | NM 17-24    | Steven Brown Revoc Trust        | A | \$2,788.00  | \$2,788.00  |  |
| Calumet     | NM 17-25    | Paul John Ecker                 | A | \$5,088.00  | \$5,088.00  |  |
| Chippewa    | TC123-2017  | Steven & Krystle Mayer          | C | \$6,400.00  | \$4,480.00  | Request exceeded current year allocation.          |
| Chippewa    | TR117-2017  | Bryon & Lisa Swoboda            | C | \$7,880.00  | \$5,516.00  | Request exceeded current year allocation.          |
| Clark       | 2017-16     | Edward D Giese                  | A | \$3,880.00  | \$3,880.00  |  |
| Crawford    | SEG-01-2017 | Ardis Severson Family Trust     | A | \$2,640.00  | \$0.00      | Project completed by 12/31. No extension required. |
| Crawford    | SEG-02-2017 | Caroline Mann                   | A | \$4,320.00  | \$0.00      | Project completed by 12/31. No extension required. |
| Crawford    | SEG-03-2017 | Ronald & Joanne Prew            | A | \$5,600.00  | \$5,600.00  |  |
| Crawford    | SEG-04-2017 | Greg & Mary Fisher              | A | \$1,200.00  | \$1,200.00  |  |
| Crawford    | SEG-05-2017 | Chris E Alston Rev Trust        | A | \$3,440.00  | \$1,800.00  | Request exceeded current year allocation.          |
| Dane        | NM 2017-1   | Ziegler Farm II LLC             | B | \$532.00    | \$532.00    |  |
| Dane        | NM 2017-10  | Dale & Julie Engeseth           | B | \$2,568.00  | \$2,568.00  |  |
| Dane        | NM 2017-11  | Mandt Family Farms LLC          | B | \$10,624.00 | \$1.00      | Request exceeded current year allocation.          |
| Dane        | NM 2017-14  | Mandt Equestrian Center LLC     | B | \$3,648.80  | \$3,648.80  |  |
| Dane        | NM 2017-15  | Roger M & Kent L Cohee          | B | \$3,160.00  | \$3,160.00  |  |
| Dane        | NM 2017-16  | Gerald & Debrah Mandt           | B | \$2,200.00  | \$2,200.00  |  |
| Dane        | NM 2017-17  | Norman & Kim Monsen             | B | \$6,732.00  | \$6,732.00  |  |
| Dane        | NM 2017-2   | Mahr Family Credit Shelter Tr   | B | \$3,860.00  | \$3,860.00  |  |
| Dane        | NM 2017-3   | Haag Living Tr                  | B | \$6,108.00  | \$6,108.00  |  |
| Dane        | NM 2017-4   | Haag Dairy LLC                  | B | \$660.00    | \$660.00    |  |
| Dane        | NM 2017-5   | Joshua & Melissa Haag & Garfoot | B | \$580.00    | \$580.00    |  |
| Dane        | NM 2017-6   | Daniel S & Kay A Breunig        | B | \$11,161.20 | \$6,808.16  | Request exceeded current year allocation.          |
| Dane        | NM 2017-7   | Mighty Oak Farm LLC             | B | \$2,356.00  | \$2,356.00  |  |
| Dane        | NM 2017-8   | Michael G Suchomel              | B | \$3,414.00  | \$3,414.00  |  |
| Dane        | NM 2017-9   | D&S Engeseth Enterprises LLC    | B | \$524.00    | \$524.00    |  |
| Door        | LW-17-14    | James & Kristine Johnson        | A | \$2,277.60  | \$2,277.60  |  |
| Fond du Lac | 636-2017    | Marianne Schaetzel              | B | \$24,416.00 | \$19,384.00 | Request exceeded current year allocation.          |
| Fond du Lac | 641-2017    | Darrin J Albrecht               | B | \$2,776.00  | \$2,776.00  |  |
| Fond du Lac | 642-2017    | Marilyn J Juckem                | B | \$1,840.00  | \$1,840.00  |  |
| Green Lake  | 2017-NM-01  | Steven J & Tami L Eisenga       | A | \$24,800.00 | \$9,176.00  | Request exceeded current year allocation.          |

## 2018 SOIL AND WATER RESOURCE MANAGEMENT GRANT PROJECT EXTENSIONS

|            |              |   |   |             |             |  |
|------------|--------------|---|---|-------------|-------------|--|
| Green Lake | 2017-NM-02   | Wesley J Eisenga                              | A | \$6,400.00  | \$6,400.00  |  |
| Green Lake | 2017-NM-03   | Jerry Eisenga                                 | A | \$12,424.00 | \$12,424.00 |  |
| Iowa       | NM-17-07     | Dennis & Elizabeth Hasburgh Revocable Trust   | A | \$1,620.00  | \$0.00      | Project completed by 12/31. No extension required. |
| Iowa       | NM-17-08     | Scott & Pamela Hellenbrand                    | A | \$1,116.00  | \$1,116.00  |  |
| Iowa       | NM-17-09     | Kathryn M Spurley                             | A | \$2,196.00  | \$2,196.00  |  |
| Iowa       | NM-17-10     | Donald W Schult                               | A | \$2,472.00  | \$2,472.00  |  |
| Iowa       | NM-17-11     | Gerald & Brenda Yager                         | A | \$1,608.00  | \$1,608.00  |  |
| Iowa       | NM-17-12     | Michael J & Jean E Ryan Revocable Trust       | A | \$636.00    | \$636.00    |  |
| Iowa       | NM-17-14     | Miess Organic LLC                             | A | \$1,800.00  | \$1,800.00  |  |
| Iowa       | NM-17-15     | Brad & Judy Yager                             | A | \$1,560.00  | \$1,560.00  |  |
| Kewaunee   | 17-324       | Reuben C & Rodney R Gove                      | B | \$2,880.00  | \$2,880.00  |  |
| Langlade   | 2017-04-AG   | Steven & Diane Menting                        | A | \$7,232.00  | \$5,063.12  | Request exceeded current year allocation.          |
| Manitowoc  | 17-546       | George & Angela Mueller                       | B | \$6,360.00  | \$6,360.00  |  |
| Manitowoc  | 17-554       | William & Lisa Reif                           | B | \$2,280.00  | \$1,912.50  | Request exceeded current year allocation.          |
| Manitowoc  | 17-566       | Alan & Linda Rezba                            | A | \$282.50    | \$282.50    |  |
| Marathon   | 2017-07-SEG  | Rosedale Dairy Inc                            | A | \$4,276.80  | \$4,276.80  |  |
| Marathon   | 2017-10-SEG  | Norbert P & Christine M Guden Revocable Trust | A | \$11,120.00 | \$11,120.00 |  |
| Marathon   | 2017-14-SEG  | Michael & Dawn Baumann                        | A | \$9,000.00  | \$9,000.00  |  |
| Marathon   | 2017-15-SEG  | Kerry J Krebs                                 | A | \$676.80    | \$676.80    |  |
| Marathon   | 2017-16-SEG  | Seubert Calf Ranches Inc                      | A | \$4,280.00  | \$4,280.00  |  |
| Marathon   | 2017-17-SEG  | Peggys LLC                                    | A | \$612.36    | \$612.36    |  |
| Marathon   | 2017-18-SEG  | John & Linda, Loren & Anita Prosocki & Birkey | A | \$7,240.00  | \$7,240.00  |  |
| Marathon   | 2017-19-SEG  | John & Linda Prosocki                         | A | \$1,960.00  | \$1,960.00  |  |
| Marathon   | 2017-20-SEG  | FLF Forward LLC                               | A | \$37,000.00 | \$10,346.80 | Request exceeded current year allocation.          |
| Marquette  | 12-17        | Hockerman Bros Inc                            | A | \$44,657.20 | \$21,019.04 | Request exceeded current year allocation.          |
| Monroe     | 403-2017     | M & S Trail View Acres LLC                    | B | \$1,820.00  | \$1,820.00  |  |
| Monroe     | 408-2017     | Riedesel Revocable Trust                      | B | \$2,940.00  | \$2,940.00  |  |
| Outagamie  | 2017-LWRM-01 | Jeffrey N & Michele Paltzer                   | A | \$5,184.00  | \$3,628.80  | Request did not equal contract amount.             |
| Outagamie  | 2017-LWRM-20 | Derald Ossmann                                | A | \$4,226.00  | \$2,958.20  | Request did not equal contract amount.             |
| Outagamie  | 2017-LWRM-21 | Dallas J & Patricia Maass                     | A | \$3,660.00  | \$2,562.00  | Request did not equal contract amount.             |
| Pepin      | 489-SEG-17   | John & Victoria Andrews                       | B | \$5,280.00  | \$3,696.00  | Request did not equal contract amount.             |
| Pierce     | 36LWRM2017   | Timothy E & Carolyn J Jennings                | B | \$19,560.00 | \$15,000.00 | Request exceeded current year allocation.          |
| Racine     | LWRM 300     | Ronald & Joyce Guckenberger                   | B | \$2,320.00  | \$2,320.00  |  |
| Racine     | LWRM 301     | Bernard Lavin                                 | B | \$2,800.00  | \$2,800.00  |  |

## 2018 SOIL AND WATER RESOURCE MANAGEMENT GRANT PROJECT EXTENSIONS

|           |           |                                  |   |             |             |  |
|-----------|-----------|----------------------------------|---|-------------|-------------|--|
| Racine    | LWRM 303  | Thomas P Greil                   | B | \$10,042.00 | \$10,042.00 |  |
| Racine    | LWRM 304  | R&C Weis Farms LLC               | B | \$19,360.00 | \$19,360.00 |  |
| Richland  | 7-17      | Joseph B & Kathleen L Stadele    | C | \$3,200.00  | \$3,200.00  |  |
| Richland  | 8-17      | Stadele Family Irrevocable Trust | C | \$9,400.00  | \$9,400.00  |  |
| Rock      | LR-019.17 | Peter Hanewall Hanewall Farms    | C | \$9,520.00  | \$6,912.79  | Request did not equal contract amount.             |
| Rock      | LR-020.17 | Arndt Angus LLC                  | C | \$7,440.00  | \$5,457.35  | Request did not equal contract amount.             |
| Rock      | LR-022.17 | Jay & Marianne Gehrt Teubert     | C | \$1,520.00  | \$1,520.00  |  |
| Rock      | LR-023.17 | Edward & Marcia Teubert          | C | \$5,601.00  | \$4,168.79  | Request did not equal contract amount.             |
| Rock      | LR-024.17 | Jamie & Jennifer Washtock        | C | \$580.00    | \$580.00    |  |
| Rock      | LR-025.17 | Robert & Jean McConnell          | C | \$5,810.80  | \$4,856.35  | Request did not equal contract amount.             |
| Rock      | LR-026.17 | Martin & Jeanette Damman         | C | \$1,120.00  | \$1,120.00  |  |
| Rock      | LR-027.17 | Mark & Pauline Heffel            | C | \$6,120.00  | \$4,663.12  | Request did not equal contract amount.             |
| Rock      | LR-028.17 | Robert Jr Pakes                  | C | \$220.00    | \$220.00    |  |
| Rock      | LR-032.17 | David & Cindy Rowe               | C | \$1,370.00  | \$1,370.00  |  |
| Rock      | LR-035.17 | William & Marion Barlass         | C | \$3,000.00  | \$3,000.00  |  |
| Rock      | LR-036.17 | Janet L Johnson                  | C | \$8,360.00  | \$8,360.00  |  |
| Rock      | LR-037.17 | Ronald D Templeton               | C | \$5,580.00  | \$5,580.00  |  |
| Rock      | LR-038.17 | Carole J Sunde Revocable Trust   | C | \$6,108.00  | \$6,108.00  |  |
| Rock      | LR-042.17 | Thomas C Young Revocable Trust   | C | \$3,231.90  | \$3,231.90  |  |
| Rock      | LR-043.17 | Leo J & Susan N Johnson          | C | \$9,160.00  | \$9,160.00  |  |
| Sauk      | NM-17-03  | Lavern F Kruse Living Trust      | C | \$1,960.00  | \$1,960.00  |  |
| Sheboygan | 247       | Mullikin Properties LLC          | C | \$10,360.00 | \$0.00      | Project completed by 12/31. No extension required. |
| Sheboygan | 248       | John P & Linda K Fischer         | C | \$8,488.00  | \$2,840.00  | Request exceeded current year allocation.          |
| Taylor    | NMP-17-05 | Pitzke Farms Inc                 | A | \$12,504.00 | \$12,504.00 |  |
| Taylor    | NMP-17-06 | Ralph & Jean M Pitzke            | A | \$2,356.00  | \$2,356.00  |  |
| Taylor    | NMP-17-10 | Edward O & Ann M Brecke          | A | \$14,832.00 | \$13,141.20 | Request exceeded current year allocation.          |
| Vernon    | 2017-51   | Joseph & Ardene Wirts            | A | \$6,152.74  | \$6,152.74  |  |
| Vernon    | 2017-52   | Robin Casper                     | A | \$1,462.30  | \$1,462.30  |  |
| Vernon    | 2017-53   | Steven Oliver                    | A | \$2,405.10  | \$2,405.10  |  |
| Vernon    | 2017-55   | Christopher & Jessica Huschka    | A | \$4,714.97  | \$4,714.97  |  |
| Vernon    | 2017-57   | D & E Van Dyke Trust             | A | \$1,061.62  | \$1,061.62  |  |
| Vernon    | 2017-59   | Todd Whisler                     | A | \$13,200.17 | \$13,200.17 |  |
| Vernon    | 2017-63   | Chad & Cynthia Georgeson         | A | \$5,115.66  | \$5,115.66  |  |
| Vernon    | 2017-65   | Travis & Jodie Oliver            | A | \$1,297.32  | \$1,297.32  |  |

## 2018 SOIL AND WATER RESOURCE MANAGEMENT GRANT PROJECT EXTENSIONS

|            |            |  |   |             |             |   |
|------------|------------|--|---|-------------|-------------|---|
| Vernon     | 2017-73    | Donald & Siri Halverson                      | A | \$1,273.75  | \$1,273.75  |   |
| Vernon     | 2017-74    | Howard & Michelle, Barbara White             | A | \$7,543.37  | \$7,543.37  |   |
| Vernon     | 2017-75    | G & G Brothers Properties LLC                | A | \$1,108.76  | \$1,108.76  |   |
| Vernon     | 2017-77    | Scott Meyer                                  | A | \$1,297.32  | \$1,297.32  |   |
| Vernon     | 2017-78    | Herbert Garlick                              | A | \$1,179.47  | \$1,179.47  |   |
| Vernon     | 2017-79    | Chad & Tamara Wirts                          | A | \$3,324.34  | \$3,324.34  |   |
| Vernon     | 2017-80    | Richard & Ronald Moilien Revocable Trust     | A | \$1,485.88  | \$1,485.88  |   |
| Vernon     | 2017-82    | John & Barbara Huschka                       | A | \$1,179.47  | \$1,179.47  |   |
| Vernon     | 2017-83    | Loran Nordgren Qualified Personal Trust II   | A | \$1,320.89  | \$1,320.89  |   |
| Vernon     | 2017-84    | Clifford & Mary Bakkum                       | A | \$2,287.26  | \$2,287.26  |   |
| Vernon     | 2017-85    | Barbara Wahlen                               | A | \$1,061.61  | \$1,061.61  |   |
| Walworth   | LW17-13    | Leo J & Susan N Johnson                      | A | \$5,496.00  | \$5,496.00  |   |
| Walworth   | LW17-14    | Richard C Reynolds                           | A | \$964.00    | \$964.00    |   |
| Walworth   | LW17-15    | Hesebeck Farms, Inc.                         | A | \$7,888.00  | \$7,888.00  |   |
| Walworth   | LW17-16    | William Patrick & Christopher Richard DeLong | A | \$6,776.00  | \$5,671.00  | Request exceeded current year allocation. |
| Walworth   | LW17-18    | Lawrence C & Karen E Nacke                   | A | \$1,440.00  | \$1.00      | Request exceeded current year allocation. |
| Washington | LWRM-17-03 | Terry A & Elizabeth M Kohl                   | A | \$740.00    | \$518.00    | Request did not equal contract amount.    |
| Washington | LWRM-17-04 | Paul Puestow                                 | A | \$720.00    | \$504.00    | Request did not equal contract amount.    |
| Washington | LWRM-17-05 | William E & Sandra L Hennes                  | A | \$1,268.00  | \$887.60    | Request exceeded current year allocation. |
| Washington | LWRM-17-06 | John B Kohl Survivors Trust                  | A | \$1,532.00  | \$1,072.40  | Request did not equal contract amount.    |
| Washington | LWRM-17-07 | Ande & Dlorah LLC                            | A | \$1,260.00  | \$882.00    | Request did not equal contract amount.    |
| Washington | LWRM-17-08 | Ralph & Mary Krumbiegel                      | A | \$1,920.00  | \$1,344.00  | Request exceeded current year allocation. |
| Washington | LWRM-17-09 | Windy Hill Organic Farm LLC                  | A | \$2,828.00  | \$1,979.60  | Request did not equal contract amount.    |
| Washington | LWRM-17-10 | Norman & Barbara Henzelmann                  | A | \$1,360.00  | \$952.00    | Request did not equal contract amount.    |
| Washington | LWRM-17-11 | Molly A DeLain Revocable Trust               | A | \$1,448.00  | \$1,013.60  | Request did not equal contract amount.    |
| Washington | LWRM-17-12 | Edward & Marlene Witte Living Trust          | A | \$1,112.00  | \$778.40    | Request did not equal contract amount.    |
| Waupaca    | LW-17-01   | Wayne A & Bonnie P Gierach                   | C | \$4,632.00  | \$4,632.00  |   |
| Waupaca    | LW-17-09   | Jonathan W & Diane J Seeger Rev Trust        | C | \$6,160.00  | \$6,160.00  |   |
| Waupaca    | LW-17-10   | Mark J & Sharon M Seeger Rev Trust           | C | \$6,564.00  | \$6,564.00  |   |
| Waupaca    | LW-17-11   | James F & Susan C Clinton                    | C | \$31,880.00 | \$31,880.00 |   |
| Waupaca    | LW-17-15   | James F & Susan C Clinton Rev Trust          | C | \$22,640.00 | \$10,068.40 | Request exceeded current year allocation. |
| Waushara   | 70-17-05   | Eric R & Jason Carley                        | A | \$1,320.00  | \$1,320.00  |   |
| Waushara   | 70-17-06   | Diane M Gable                                | A | \$1,440.00  | \$1,440.00  |   |
| Waushara   | 70-17-08   | Jerry & Pamela Strey                         | A | \$7,760.00  | \$7,760.00  |   |

## 2018 SOIL AND WATER RESOURCE MANAGEMENT GRANT PROJECT EXTENSIONS

|                     |              |  |                      |                       |                       |  |
|---------------------|--------------|--|----------------------|-----------------------|-----------------------|--|
| Waushara            | 70-17-09     | Juanita Drury  | A                    | \$520.00              | \$520.00              |  |
| Waushara            | 70-17-10     | Kim A Rucks  | A                    | \$1,520.00            | \$1,520.00            |  |
| Waushara            | 70-17-11     | Robert A Winter  | A                    | \$1,720.00            | \$1,720.00            |  |
| Waushara            | 70-17-12     | Harris & Carol Nitzke                                  | A                    | \$2,400.00            | \$2,400.00            |  |
| Waushara            | 70-17-13     | Paul Fink  | A                    | \$1,480.00            | \$1,480.00            |  |
| Waushara            | 70-17-14     | Brian P & Sarah J Decker                               | A                    | \$1,480.00            | \$1,480.00            |  |
| Waushara            | 70-17-15     | Sonya Rodencal   | A                    | \$1,400.00            | \$354.00              | Request exceeded current year allocation.          |
| Waushara            | 70-17-16     | Sharon M Boles Revocable Trust                         | A                    | \$560.00              | \$1.00                | Request exceeded current year allocation.          |
| Waushara            | 70-17-17     | Leland H & Lois E Krause Irrevocable Income Only Trust | A                    | \$800.00              | \$1.00                | Request exceeded current year allocation.          |
| Waushara            | 70-17-19     | Dave Schneider   | A                    | \$240.00              | \$1.00                | Request exceeded current year allocation.          |
| Waushara            | 70-17-20     | Eloise M Krause Irrevocable Trust                      | A                    | \$600.00              | \$1.00                | Request exceeded current year allocation.          |
| Waushara            | 70-17-22     | Stanley Niklinski                                      | A                    | \$2,920.00            | \$1.00                | Request exceeded current year allocation.          |
| Waushara            | 70-17-23     | John & Cynthia Jarvis                                  | A                    | \$7,720.00            | \$1.00                | Request exceeded current year allocation.          |
| Winnebago           | LW-SEG-17-01 | Daniel Rieckmann                                       | C                    | \$8,620.40            | \$8,620.40            |  |
| Winnebago           | LW-SEG-17-02 | Chad & Lindsay Rieckmann                               | C                    | \$323.20              | \$323.20              |  |
| Winnebago           | LW-SEG-17-04 | Randall L & Susan L Stadtmueller                       | C                    | \$2,702.40            | \$2,702.40            |  |
| Winnebago           | LW-SEG-17-08 | Arthur L & Majorie A Tellock                           | C                    | \$2,040.80            | \$2,040.80            |  |
| Winnebago           | LW-SEG-17-11 | Linstedt Family Irrov Trust                            | C                    | \$4,501.20            | \$4,501.20            |  |
| Winnebago           | LW-SEG-17-12 | Donald J Sr & Jeanette L Fascio                        | C                    | \$4,413.20            | \$4,413.20            |  |
| Winnebago           | LW-SEG-17-16 | Edward H & Beverly J Rehfeldt Trust                    | C                    | \$3,743.20            | \$3,743.20            |  |
| Winnebago           | LW-SEG-17-18 | Linda & Joy McCann & Mary Tellock Kelly                | C                    | \$736.80              | \$736.80              |  |
| Wood                | 17-LWRM-14   | Nathan P & Lynette A Wolosek                           | A                    | \$1,495.00            | \$1,495.00            |  |
| Wood                | 17-LWRM-19   | Triple P Dairy LLC                                     | A                    | \$8,364.28            | \$0.00                | Project completed by 12/31. No extension required. |
| Wood                | 17-LWRM-20   | Kyle D & Lauren S. Altmann                             | A                    | \$10,480.40           | \$0.00                | Project completed by 12/31. No extension required. |
| Wood                | 17-LWRM-21   | Altmann Enterprises Dairy LLC                          | A                    | \$1,192.80            | \$0.00                | Project completed by 12/31. No extension required. |
| Wood                | 17-LWRM-22   | Altmann Enterprises Grain LLC                          | A                    | \$3,735.20            | \$0.00                | Project completed by 12/31. No extension required. |
| Wood                | 17-LWRM-25   | Otter Creek Farms                                      | A                    | \$6,712.52            | \$6,712.52            |  |
| <b>Count:</b>       | <b>194</b>   |  | <b>Totals:</b>       | <b>\$928,166.56</b>   | <b>\$712,426.86</b>   |  |
| <b>Total Count:</b> | <b>392</b>   |  | <b>Grand Totals:</b> | <b>\$2,532,717.25</b> | <b>\$1,988,609.65</b> |  |

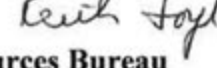
## \*Key Explaining Reasons for Extension Requests

- A. Unfavorable weather conditions
- B. Unavailability of contractors
- C. Extenuating circumstances

CORRESPONDENCE/MEMORANDUM \_\_\_\_\_ State of Wisconsin

**DATE:** March 21, 2018

**TO:** Land and Water Conservation Board Members and Advisors

**FROM:** Keith Foye, DATCP   
Land and Water Resources Bureau

**SUBJECT:** LWCB input regarding the biennial budget

**Recommended Action:** This memorandum is intended to provide general guidance to the LWCB and does not include a recommendation regarding Board action.

**Background:** The April 3rd LWCB agenda includes an item entitled "Gathering input from stakeholders and public on funding and the annual joint allocation plan." In the past discussions of similar agenda items, the LWCB considered its role in providing recommendations regarding the funding of the nonpoint source pollution control program as part of the state's biennial budget.

The following sections of chapter 92 support the LWCB's authority to make recommendations related to the budget:

- s. 92.04(1)(c) The board may make studies and recommendations on matters relating to soil and water conservation.
- s. 92.04 (2)(a) The board shall advise DATCP and the DATCP secretary on matters relating to exercise of DATCP's authority under this chapter.

As indicated by the attached materials, LWCB should submit any recommendations to DATCP and DNR well in advance of when the agencies complete their budget proposals in September of this year. There may also be opportunities for the LWCB to submit recommendations directly to the governor.

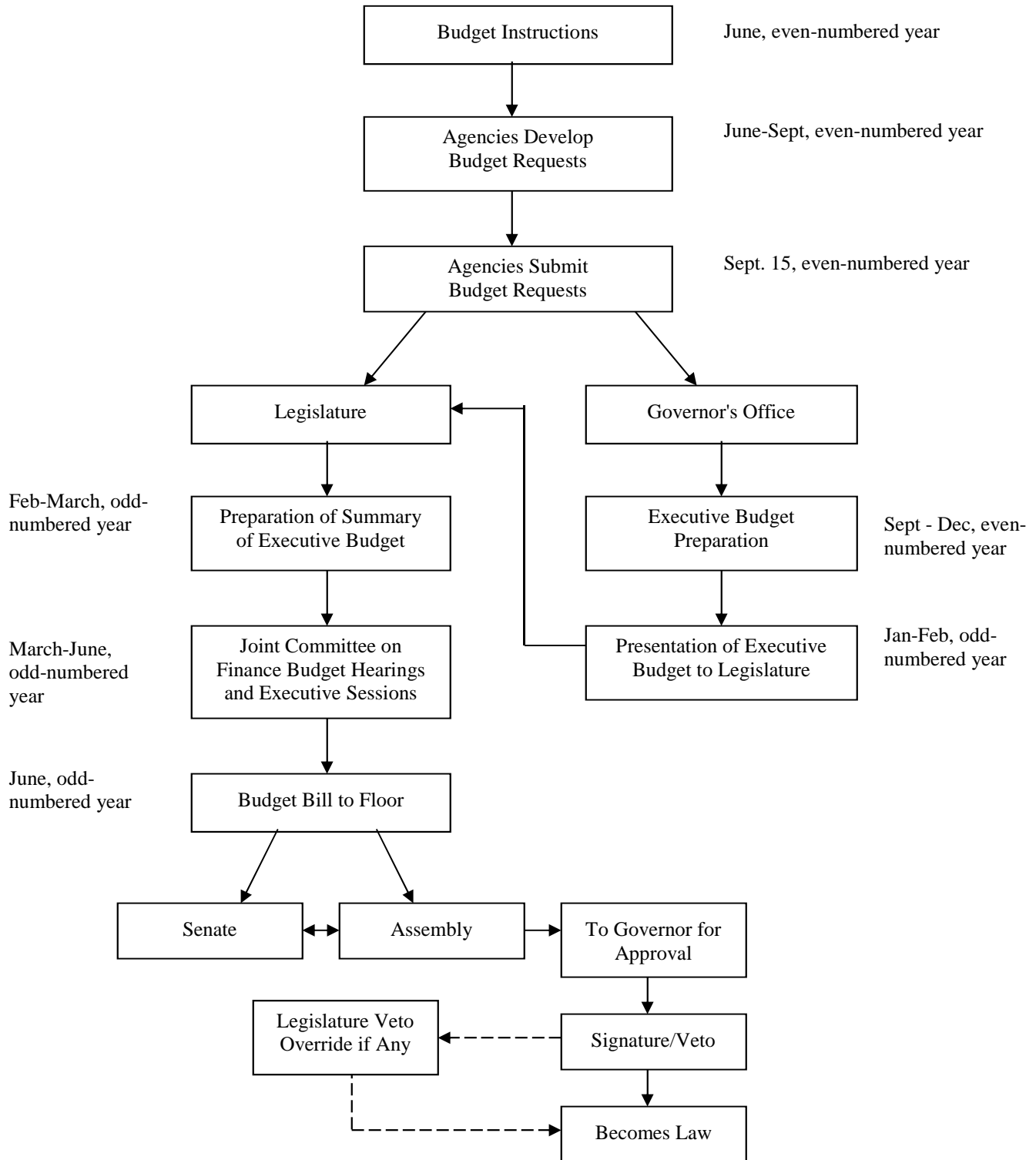
**Materials:** CHART 2 Wisconsin's Biennial Budget Flow Chart, from *State Budget Process*, Informational Paper 74, Wisconsin Legislative Fiscal Bureau, January, 2017,  
[https://docs.legis.wisconsin.gov/misc/lfb/informational\\_papers/january\\_2017/0073\\_state\\_budget\\_process\\_informational\\_paper\\_73.pdf](https://docs.legis.wisconsin.gov/misc/lfb/informational_papers/january_2017/0073_state_budget_process_informational_paper_73.pdf)

**PRESENTER:** Richard Castelnuovo, DATCP



**CHART 2**

**Wisconsin's Biennial Budget Flow Chart**



**2017 DATCP TRANSFERS AND AWARDS FROM DATCP RESERVE**

| <b>Inter-County BOND Fund Transfers</b> |                         |                        |   |                               |                        |
|---|-------------------------|------------------------|---|-------------------------------|------------------------|
| <b>Transferring County</b>              | <b>Receiving County</b> | <b>Transfer Amount</b> | <b>Date Received Agreement by DATCP</b> | <b>Date Approved by DATCP</b> | <b>Days to Approve</b> |
| Milwaukee                               | Ozaukee                 | 15,000                 | 10/3/2017                               | 10/5/2017                     | 3                      |
| Menominee                               | Jackson                 | 7,857                  | 10/5/2017                               | 10/6/2017                     | 1                      |
| Juneau                                  | Racine                  | 3,000                  | 10/19/2017                              | 10/24/2017                    | 6                      |
| Lafayette                               | Jackson                 | 27,000                 | 10/27/2017                              | 10/27/2017                    | 1                      |
| Kenosha                                 | Racine                  | 11,081                 | 10/31/2017                              | 10/31/2017                    | 1                      |
| Juneau                                  | Jackson                 | 21,000                 | 11/15/2017                              | 11/15/2017                    | 1                      |
| Trempealeau                             | Vernon                  | 8,500                  | 11/22/2017                              | 11/22/2017                    | 1                      |
| Door                                    | Marathon                | 10,970                 | 11/28/2017                              | 11/28/2017                    | 1                      |
| Langlade                                | Marathon                | 2,621                  | 11/28/2017                              | 11/28/2017                    | 1                      |
| Jefferson                               | Marathon                | 1,000                  | 11/28/2017                              | 11/28/2017                    | 1                      |
| Polk                                    | Eau Claire              | 2,204                  | 11/29/2017                              | 11/29/2017                    | 1                      |
| Waukesha                                | Washington              | 793                    | 11/30/2017                              | 11/30/2017                    | 1                      |
| Lincoln                                 | Marathon                | 13,274                 | 11/30/2017                              | 11/30/2017                    | 1                      |
| Forest                                  | Shawano                 | 1,900                  | 12/1/2017                               | 12/1/2017                     | 1                      |
| Forest                                  | Marathon                | 3,356                  | 12/1/2017                               | 12/1/2017                     | 1                      |
| <b>15 BOND Transfers Totaling:</b>      |                         | <b>129,556</b>         |   | <b>Average Days:</b>          | <b>1.5</b>             |

| <b>Inter-County SEG Fund Transfers</b> |                         |                        |   |                               |                        |
|--|-------------------------|------------------------|---|-------------------------------|------------------------|
| <b>Transferring County</b>             | <b>Receiving County</b> | <b>Transfer Amount</b> | <b>Date Received Agreement by DATCP</b> | <b>Date Approved by DATCP</b> | <b>Days to Approve</b> |
| Jefferson                              | Marquette               | 10,000                 | 8/16/2017                               | 8/16/2017                     | 1                      |
| Jackson                                | Ozaukee                 | 15,500                 | 9/7/2017                                | 9/8/2017                      | 2                      |
| Jackson                                | Marquette               | 12,500                 | 9/13/2017                               | 9/13/2017                     | 1                      |
| Ashland                                | Vernon                  | 11,584                 | 10/10/2017                              | 10/10/2017                    | 1                      |
| Kenosha                                | Rock                    | 14,000                 | 11/02/2017                              | 11/3/2017                     | 2                      |
| Buffalo                                | La Crosse               | 14,000                 | 11/9/2017                               | 11/10/2017                    | 2                      |
| Rusk                                   | La Crosse               | 14,000                 | 11/13/2017                              | 11/14/2017                    | 2                      |
| Dunn                                   | La Crosse               | 6,104                  | 11/14/2017                              | 11/14/2017                    | 1                      |
| Clark                                  | La Crosse               | 20,000                 | 11/20/2017                              | 11/20/2017                    | 1                      |
| Sawyer                                 | Burnett                 | 2,531                  | 11/22/2017                              | 11/22/2017                    | 1                      |
| Langlade                               | La Crosse               | 22,399                 | 11/28/2017                              | 11/28/2017                    | 1                      |
| Washburn                               | Burnett                 | 5,600                  | 11/28/2017                              | 11/28/2017                    | 1                      |
| Clark                                  | Taylor                  | 13,122                 | 11/28/2017                              | 11/28/2017                    | 1                      |
| Chippewa                               | La Crosse               | 13,228                 | 11/29/2017                              | 11/30/2017                    | 2                      |
| Adams                                  | Wood                    | 21,924                 | 11/30/2017                              | 11/30/2017                    | 1                      |
| Barron                                 | Vernon                  | 1,192                  | 11/30/2017                              | 12/1/2017                     | 2                      |
| Crawford                               | Vernon                  | 5,900                  | 11/30/2017                              | 12/1/2017                     | 2                      |
| Winnebago                              | Waupaca                 | 22,918                 | 12/19/2017                              | 12/20/2017                    | 2                      |
| <b>18 SEG Transfers Totaling:</b>      |                         | <b>226,502</b>         |   | <b>Average Days:</b>          | <b>1.4</b>             |

| <b>DATCP Awards from NOD/NOI Reserve of \$350,000</b> |                        |  |                               |                        |
|---|------------------------|--|-------------------------------|------------------------|
| <b>Receiving County</b>                               | <b>Transfer Amount</b> | <b>Date Received Re-Allocation Form by DATCP</b> | <b>Date Approved by DATCP</b> | <b>Days to Approve</b> |
| Taylor  | 194,085                | 6/28/2017  | 8/1/2017                      | 34                     |
| Kewaunee  | 25,430                 | 7/24/2017  | 7/31/2017                     | 8                      |
| <b>Sub-Total</b>                                      | <b>219,515</b>         |  |                               | <b>21</b>              |

**Table A: 2017 Allocations of DATCP Funding Adjusted for Transfers and Reallocations**

| County      | DATCP Staffing & Support Allocation | LWRM Plan Implementation |                  | Total DATCP 2017 Allocation | County  | DATCP Staffing & Support Allocation | LWRM Plan Implementation |                    | Total DATCP 2017 Allocation |
|-------------|-------------------------------------|--------------------------|------------------|-----------------------------|---|-------------------------------------|--------------------------|--------------------|-----------------------------|
|             |                                     | Bond Cost-Sharing        | SEG Cost-Sharing |                             |   |                                     | Bond Cost-Sharing        | SEG Cost-Sharing   |                             |
| Adams       | 117,482                             | 48,800                   | 6,076            | 172,358                     | Oconto  | 127,455                             | 38,500                   | 0                  | 165,955                     |
| Ashland     | 107,464                             | 42,800                   | 2,416            | 152,680                     | Oneida  | 92,391                              | 27,500                   | 0                  | 119,891                     |
| Barron      | 112,849                             | 43,000                   | 26,808           | 182,657                     | Outagamie                                     | 166,047                             | 53,800                   | 62,500             | 282,347                     |
| Bayfield    | 107,363                             | 48,800                   | 8,400            | 164,563                     | Ozaukee                                       | 147,874                             | 63,800                   | 57,900             | 269,574                     |
| Brown       | 138,896                             | 28,500                   | 5,000            | 172,396                     | Pepin   | 115,099                             | 40,000                   | 11,200             | 166,299                     |
| Buffalo     | 108,713                             | 43,000                   | 0                | 151,713                     | Pierce  | 126,417                             | 74,400                   | 15,000             | 215,817                     |
| Burnett     | 103,748                             | 16,000                   | 25,131           | 144,879                     | Polk  | 150,195                             | 47,796                   | 0                  | 197,991                     |
| Calumet     | 124,409                             | 23,500                   | 62,500           | 210,409                     | Portage                                       | 131,881                             | 58,300                   | 0                  | 190,181                     |
| Chippewa    | 166,072                             | 58,300                   | 23,772           | 248,144                     | Price   | 78,226                              | 33,500                   | 0                  | 111,726                     |
| Clark       | 103,686                             | 58,300                   | 29,378           | 191,364                     | Racine  | 130,054                             | 67,381                   | 37,000             | 234,435                     |
| Columbia    | 141,361                             | 62,800                   | 62,500           | 266,661                     | Richland                                      | 96,681                              | 38,500                   | 28,000             | 163,181                     |
| Crawford    | 105,159                             | 38,500                   | 15,100           | 158,759                     | Rock  | 161,482                             | 62,800                   | 70,000             | 294,282                     |
| Dane        | 150,418                             | 33,000                   | 45,000           | 228,418                     | Rusk  | 98,906                              | 48,800                   | 0                  | 147,706                     |
| Dodge       | 138,382                             | 29,000                   | 10,000           | 177,382                     | Saint Croix                                   | 140,820                             | 24,500                   | 20,000             | 185,320                     |
| Door        | 156,727                             | 12,530                   | 19,600           | 188,857                     | Sauk  | 127,418                             | 58,300                   | 42,400             | 228,118                     |
| Douglas     | 111,700                             | 20,000                   | 0                | 131,700                     | Sawyer  | 82,880                              | 39,300                   | 0                  | 122,180                     |
| Dunn        | 155,232                             | 58,300                   | 5,096            | 218,628                     | Shawano                                       | 112,559                             | 22,900                   | 27,600             | 163,059                     |
| Eau Claire  | 141,286                             | 56,004                   | 42,400           | 239,690                     | Sheboygan                                     | 136,148                             | 53,800                   | 14,000             | 203,948                     |
| Florence    | 81,444                              | 42,800                   | 0                | 124,244                     | Taylor  | 105,028                             | 268,485                  | 41,122             | 414,635                     |
| Fond du Lac | 137,989                             | 40,000                   | 24,000           | 201,989                     | Trempealeau                                   | 108,892                             | 49,800                   | 42,400             | 201,092                     |
| Forest      | 81,833                              | 8,744                    | 0                | 90,577                      | Vernon  | 116,932                             | 66,800                   | 61,076             | 244,808                     |
| Grant       | 100,014                             | 62,800                   | 0                | 162,814                     | Vilas   | 112,786                             | 27,500                   | 0                  | 140,286                     |
| Green       | 134,183                             | 58,300                   | 42,400           | 234,883                     | Walworth                                      | 141,386                             | 53,800                   | 20,020             | 215,206                     |
| Green Lake  | 133,963                             | 48,800                   | 28,000           | 210,763                     | Washburn                                      | 102,756                             | 48,800                   | 0                  | 151,556                     |
| Iowa        | 100,568                             | 29,000                   | 24,000           | 153,568                     | Washington                                    | 121,716                             | 49,593                   | 10,080             | 181,389                     |
| Iron        | 93,860                              | 40,000                   | 0                | 133,860                     | Waukesha                                      | 157,127                             | 24,207                   | 0                  | 181,334                     |
| Jackson     | 123,348                             | 130,257                  | 0                | 253,605                     | Waupaca                                       | 121,593                             | 74,400                   | 65,318             | 261,311                     |
| Jefferson   | 170,893                             | 34,000                   | 4,000            | 208,893                     | Waushara                                      | 119,322                             | 48,800                   | 20,000             | 188,122                     |
| Juneau      | 122,254                             | 29,800                   | 37,000           | 189,054                     | Winnebago                                     | 142,529                             | 28,700                   | 27,082             | 198,311                     |
| Kenosha     | 117,448                             | 37,719                   | 0                | 155,167                     | Wood  | 120,642                             | 74,400                   | 53,928             | 248,970                     |
| Kewaunee    | 124,565                             | 79,230                   | 16,800           | 220,595                     | Reserve                                       |                                     | 130,485                  |                    | 130,485                     |
| LaCrosse    | 155,896                             | 53,300                   | 152,231          | 361,427                     | Sub-Totals                                    | \$8,739,100                         | \$3,665,000              | \$1,735,935        | \$14,140,035                |
| Lafayette   | 94,578                              | 31,300                   | 42,400           | 168,278                     |   |                                     |                          |                    |                             |
| Langlade    | 88,069                              | 46,179                   | 5,601            | 139,849                     | <b>OTHER PROJECT COOPERATOR (OPC) FUNDING</b> |                                     |                          |                    |                             |
| Lincoln     | 81,839                              | 40,026                   | 0                | 121,865                     | UW-CALS                                       |                                     | 390,000                  | 390,000            |                             |
| Manitowoc   | 156,975                             | 53,800                   | 62,500           | 273,275                     | Nutrient Management Farmer Education (NMFE)   |                                     | 175,814                  | 175,814            |                             |
| Marathon    | 145,872                             | 110,121                  | 62,500           | 318,493                     | WI Land + Water (WLWCA)                       |                                     | 156,986                  | 156,986            |                             |
| Marinette   | 139,485                             | 48,800                   | 42,400           | 230,685                     | Standard Oversight Council (SOC)              |                                     | 35,000                   | 35,000             |                             |
| Marquette   | 112,787                             | 48,800                   | 59,500           | 221,087                     | Conservation Observance Day                   |                                     | 3,000                    | 3,000              |                             |
| Menominee   | 75,000                              | 12,143                   | 0                | 87,143                      | UW-Extension                                  |                                     | 20,000                   | 20,000             |                             |
| Milwaukee   | 75,000                              | 0                        | 0                | 75,000                      | Sub-Totals                                    |                                     | \$780,800                | \$780,800          |                             |
| Monroe      | 107,048                             | 58,300                   | 16,800           | 182,148                     | <b>TOTAL</b>                                  | <b>\$8,739,100</b>                  | <b>\$3,665,000</b>       | <b>\$2,516,735</b> | <b>\$14,920,835</b>         |

**CORRESPONDENCE/MEMORANDUM** \_\_\_\_\_ **State of Wisconsin**

**DATE:** March 23, 2018

**TO:** Land and Water Conservation Board Members and Advisors

**FROM:** Mary Rose Teves, DNR   
Bureau of Community Financial Assistance

**SUBJECT:** DNR accounting of 2017 transfers of cost-share dollars and  
CY 2017 Notice of Discharge/Notice of Intent grants

**Recommended Action:** The informational item serves two purposes for calendar year 2017:

- Final accounting of Notice of Intent (NOI)/Notice of Discharge (NOD) grants awarded
- Summarizes transfers of cost-share funds approve by both DNR

**Summary of Notice of Intent/Notice of Discharge Grant Awards:** From the total available funding of \$2,027,360\* for calendar year 2017, DNR and DATCP accepted and funded ten NOD/NOI grant applications, providing \$743,263 in awards for projects in nine counties. DATCP awarded \$272,947 of NOD/NOI funds for the Baxter and Wasylko projects, both in Taylor County. List of DNR awards are summarized below.

Balance of NOD/NOI funding remaining at the end of calendar year 2017 = \$1,284,097. The DNR has placed its 2017 NOD/NOI balance in a reserve for future allocations.

**Summary of 2017 NOI/NOD Awards, Wisconsin DNR**

| County Name     | Project Name                        | Award Amount        |
|-----------------|-------------------------------------|---------------------|
| Barron County   | Jonathon Olson NOD                  | \$10,045.00         |
| Clark County    | Thomas Dankemyer NOD                | \$139,001.00        |
| Columbia County | Guenther Runoff Management NOD      | \$148,424.00        |
| Door County     | Brickner Meikle NOD                 | \$78,161.00         |
| Jackson County  | Brad Anderson Barnyard Runoff NOD   | \$13,300.00         |
| Monroe County   | Henze Manure Storage & Runoff NOD   | \$40,000.00         |
| Shawano County  | Zernicke Landstad Dairy, LLC NOD    | \$264,996.00        |
| Vernon County   | Joel D. Goede and Lorn F. Goede NOD | \$49,336.00         |
|                 | <b>Total =</b>                      | <b>\$743,263.00</b> |

\* The DNR added calendar year 2016 underspending of \$27,360 to its 2017 starting balance of \$2,000,000 creating an overall NOD allocation of \$2,027,360 for calendar year 2017.

**Summary of Transfers of Cost-share Funds approve by both DATCP and DNR**

Between 2000 and 2010, the DNR allowed the transfer cost-share funds among counties with Priority Watershed projects. As the last of the Priority Watershed projects ended on Dec 31, 2010, the DNR no longer approves the transfer of any cost-share funds between counties.

**Materials Provided:** This memo

**Presenters:** Written Report Only